

DSWD DROMIC Terminal Report on the Mw 7.0 Earthquake Incident in Tayum, Abra

07 January 2023, 6PM

I. Situation Overview

On 27 July 2022 at 8:43 AM, a 7.0-magnitude earthquake jolted the Municipality of Tayum, Abra (17.64°N, 120.63°E - 003 km N 45°W) with a tectonic origin and a depth of focus of 017 km. The earthquake was also felt in the neighboring municipalities.

Date/Time:	27 Jul 2022 - 8:43:24 AM
Reported Intensities:	<p>Intensity VII - Bucloc and Manabo, Abra Intensity VI - Vigan City, Sinait, Bantay, San Esteban, Ilocos Sur; Laoac, Pangasinan; Baguio City; Intensity V - Magsingal and San Juan, Ilocos Sur, Alaminos City and Labrador, Pangasinan; Bambang, Nueva Vizcaya; Mexico, Pampanga; Concepcion, and Tarlac City, Tarlac; City of Manila; City of Malabon Intensity IV - City of Marikina; Quezon City; City of Pasig; City of Valenzuela; City of Tabuk, Kalinga; Bautista and Malasiqui, Pangasinan; Bayombong and Diadi, Nueva Vizcaya; Guiguinto, Obando, and San Rafael, Bulacan; San Mateo, Rizal Intensity III - Bolinao, Pangasinan; Bulakan, Bulacan; Tanay, Rizal Intensity II - General Trias City, Cavite; Santa Rosa City, Laguna</p> <p>Instrumental Intensities:</p> <p>Intensity VII - Vigan City Intensity V - Laoag City, Ilocos Norte; Peñablanca, Cagayan; Dagupan City, Pangasinan; Sinait, Ilocos Sur; Baguio City Intensity IV - Gonzaga, Cagayan; Baler, Aurora; Bayombong, Nueva Vizcaya; Ramos, Tarlac; Ilagan, Isabela; Basista, Pangasinan; Claveria, Cagayan; San Jose, Palayan City and Cabanatuan City, Nueva Ecija; Madella, Quirino; Tabuk, Kalinga; Santiago City, Isabela Intensity III - Quezon City; Iba, Zambales; Navotas City, Malabon City, Metro Manila; Magalang & Guagua Pampanga; Bolinao, Sison & Infanta, Pangasinan; Bulakan, San Ildefonso, Guiguinto, Plaridel, and Malolos City, Bulacan; Tarlac City, Tarlac Intensity II - Dona Remedios Trinidad, Angat & Santa Maria, Bulacan; Tagaytay City, Cavite; Pasig City Metro Manila; Polillo, Gumaca & Infanta, Quezon Intensity I - Tanay, Taytay, Morong, Antipolo City, Rizal; Marilao, Bulacan; San Juan City, Las Pinas City, Metro Manila; Lucban, Quezon; Subic, Zambales; Mercedes, Camarines Norte; Olongapo City, Zambales; Carmona, Cavite</p>
Expecting Damage:	YES
Expecting Aftershocks:	YES

On 28 August 2022 at 2:27 AM, a 5.2-magnitude earthquake jolted the Municipality of Pilar, Abra (17.43°N, 120.49°E - 011 km N 78°W) with a tectonic origin and a depth of

focus of 018 km. This is an aftershock of the 27 July 2022 Mw 7.0 earthquake in Tayum, Abra. This particular incident was also felt in the neighboring municipalities.

Source: DOST-PHIVOLCS Earthquake Bulletin

II. Status of Affected Areas and Population

A total of **156,000 families** or **574,209 persons** were affected in **1,420 barangays** in **Regions I, II, and CAR** (see Table 1).

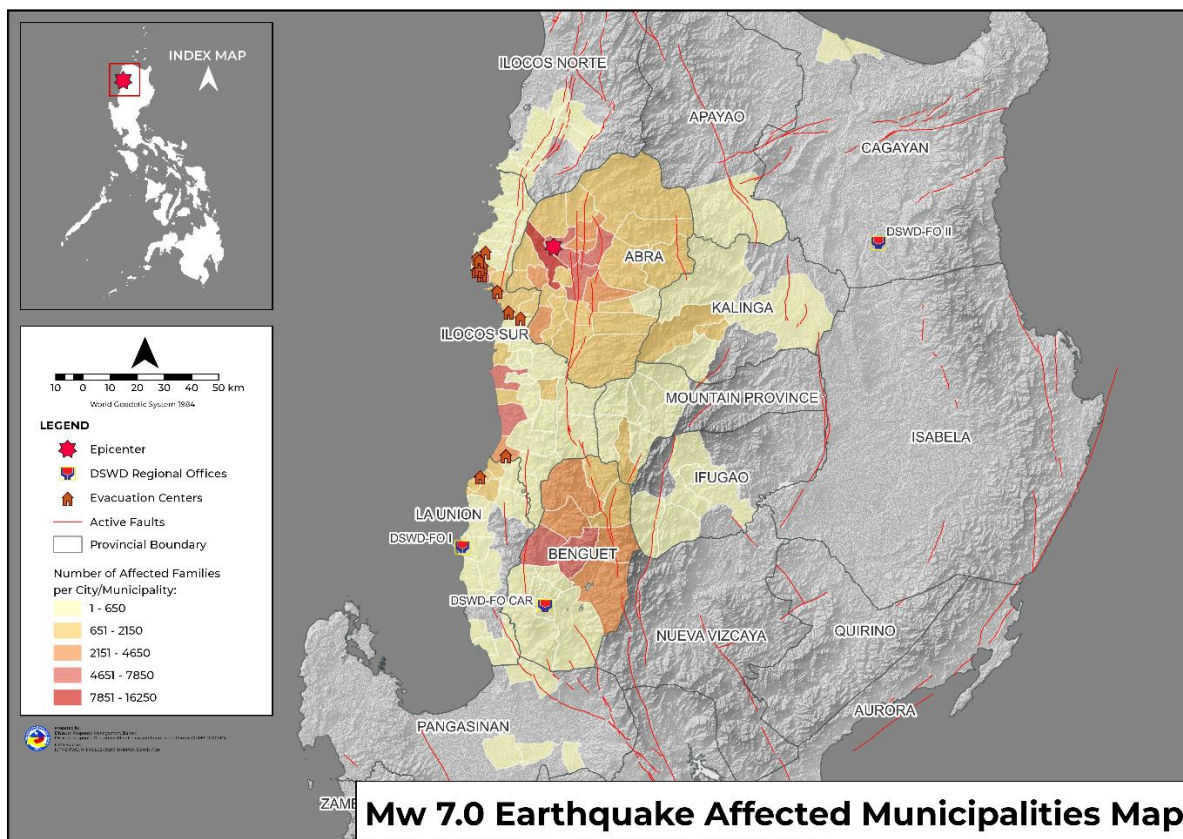
Table 1. Number of Affected Families / Persons

REGION / PROVINCE / MUNICIPALITY	NUMBER OF AFFECTED		
	Barangays	Families	Persons
GRAND TOTAL	1,420	156,000	574,209
REGION I	818	41,610	163,789
Ilocos Norte	25	37	173
<i>Badoc</i>	10	20	99
<i>CITY OF BATAC</i>	3	3	20
<i>Dingras</i>	2	2	2
<i>Marcos</i>	1	1	5
<i>Pinili</i>	8	10	43
<i>Sarrat</i>	1	1	4
Ilocos Sur	618	37,548	147,834
<i>Alilem</i>	5	34	165
<i>Banayoyo</i>	13	301	1351
<i>Bantay</i>	21	230	1072
<i>Burgos</i>	24	463	1808
<i>Cabugao</i>	19	215	686
<i>CITY OF CANDON</i>	40	5447	19011
<i>Caoayan</i>	17	7329	36340
<i>Cervantes</i>	13	325	1564
<i>Galimuyod</i>	23	297	1550
<i>Gregorio del Pilar (Concepcion)</i>	7	1247	6235
<i>Lidlidda</i>	8	53	177
<i>Magsingal</i>	25	313	1060
<i>Nagbukel</i>	12	1661	5827
<i>Narvacan</i>	29	828	3082
<i>Quirino (Angkaki)</i>	9	239	911
<i>Salcedo (Baugen)</i>	19	407	1207
<i>San Emilio</i>	8	439	1818
<i>San Esteban</i>	10	96	298
<i>San Ildefonso</i>	7	79	254
<i>San Juan (Lapog)</i>	22	371	1223
<i>San Vicente</i>	4	66	303
<i>Santa</i>	22	1653	8340
<i>Santa Catalina</i>	7	515	1971
<i>Santa Cruz</i>	49	7815	25567
<i>Santa Lucia</i>	36	1132	3927
<i>Santa Maria</i>	26	149	596
<i>Santiago</i>	23	963	3084
<i>Santo Domingo</i>	18	266	1304
<i>Sigay</i>	3	9	50
<i>Sinait</i>	7	25	97
<i>Sugpon</i>	5	92	388
<i>Suyo</i>	8	465	2325
<i>Tagudin</i>	40	3287	11180
<i>CITY OF VIGAN (Capital)</i>	39	737	3063

REGION / PROVINCE / MUNICIPALITY	NUMBER OF AFFECTED		
	Barangays	Families	Persons
La Union	169	4,018	15,751
<i>Agoo</i>	1	2	7
<i>Bacnotan</i>	17	54	270
<i>Balaoan</i>	22	906	4,458
<i>Bangar</i>	26	1,199	3,581
<i>Bauang</i>	14	67	320
<i>Caba</i>	5	9	39
<i>Luna</i>	25	1,533	6,069
<i>Naguilian</i>	18	78	284
<i>Pugo</i>	1	1	8
<i>Rosario</i>	2	2	15
<i>CITY OF SAN FERNANDO (Capital)</i>	9	13	45
<i>San Juan</i>	7	49	198
<i>Santo Tomas</i>	5	6	25
<i>Santol</i>	3	5	15
<i>Sudipen</i>	14	94	417
Pangasinan	6	7	31
<i>Balungao</i>	3	4	20
<i>Malasiqui</i>	1	1	6
<i>Sison</i>	1	1	4
<i>Villasis</i>	1	1	1
REGION II	1	1	4
Cagayan	1	1	4
<i>Aparri</i>	1	1	4
CAR	601	114,389	410,416
Abra	303	79,793	268,901
<i>Bangued (capital)</i>	31	16,242	52,463
<i>Boliney</i>	8	938	4,629
<i>Bucay</i>	21	6,226	21,125
<i>Bucloc</i>	4	715	2,614
<i>Daguioman</i>	4	482	2,107
<i>Danglas</i>	7	1,342	4,026
<i>Dolores</i>	15	3,879	12,277
<i>La Paz</i>	12	5,210	16,953
<i>Lacub</i>	6	1,168	5,687
<i>Lagangilang</i>	17	5,148	15,207
<i>Lagayan</i>	5	1,613	4,488
<i>Langiden</i>	6	1,385	3,872
<i>Licuan-Baay (Licuan)</i>	11	1,736	6,099
<i>Luba</i>	8	1,890	6,707
<i>Malibcong</i>	12	1,157	4,534
<i>Manabo</i>	11	1,322	5,407
<i>Penarrubia</i>	9	2,148	7,945
<i>Pidigan</i>	15	3,848	12,511
<i>Pilar</i>	19	3,595	11,675
<i>Sallapadan</i>	9	2,586	8,117
<i>San Isidro</i>	9	1,695	8,039
<i>San Juan</i>	19	3,890	11,867
<i>San Quintin</i>	6	1,976	5,640
<i>Tayum</i>	11	5,306	17,159
<i>Tineg</i>	10	1,031	5,646
<i>Tube</i>	10	1,451	5,845
<i>Villaviciosa</i>	8	1,814	6,262
Apayao	8	87	349
<i>Conner</i>	8	87	349
Benguet	110	29,222	119,818

REGION / PROVINCE / MUNICIPALITY	NUMBER OF AFFECTED		
	Barangays	Families	Persons
<i>Atok</i>	8	5,739	20,342
<i>Baguio City</i>	5	7	34
<i>Bakun</i>	7	4,221	17,623
<i>Bokod</i>	10	4,345	20,215
<i>Buguias</i>	14	787	4,259
<i>Itogon</i>	3	16	72
<i>Kabayan</i>	13	3,443	17,238
<i>Kapangan</i>	15	4,933	21,483
<i>Kibungan</i>	7	4,604	13,812
<i>La Trinidad (capital)</i>	8	25	80
<i>Mankayan</i>	12	1,023	4,267
<i>Sablan</i>	1	1	7
<i>Tuba</i>	3	25	139
<i>Tublay</i>	4	53	247
Ifugao	41	226	1,086
<i>Asipulo</i>	3	5	14
<i>Banaue</i>	10	68	397
<i>Hingyon</i>	7	14	51
<i>Kiangan</i>	8	62	264
<i>Lagawe (capital)</i>	5	20	108
<i>Tinoc</i>	8	57	252
Kalinga	36	1,854	7,409
<i>Balbalan</i>	9	137	523
<i>Lubuagan</i>	9	1,004	3,730
<i>Pasil</i>	14	706	3,142
<i>Tinglayan</i>	1	1	1
<i>City of Tabuk (capital)</i>	3	6	13
Mountain Province	103	3,207	12,853
<i>Bontoc (capital)</i>	14	595	2,776
<i>Sadanga</i>	6	57	271
<i>Bauko</i>	22	1,202	4,756
<i>Besao</i>	12	163	281
<i>Sabangan</i>	15	641	2,555
<i>Sagada</i>	15	115	369
<i>Tadian</i>	19	434	1,845

Source: DSWD Field Offices (FOs)



III. Status of Displaced Population

a. Inside Evacuation Center

There are **53 families** or **213 persons** still taking temporary shelter in **three (3) evacuation centers** in Region I (see Table 2).

Table 2. Number of Displaced Families / Persons Inside Evacuation Center

REGION / PROVINCE / MUNICIPALITY	NUMBER OF EVACUATION CENTERS (ECs)		NUMBER OF DISPLACED INSIDE ECs			
	CUM	NOW	Families		Persons	
			CUM	NOW	CUM	NOW
GRAND TOTAL	125	3	8,036	53	31,089	213
REGION I	60	3	4,847	53	19,442	213
Ilocos Sur	50	3	2,165	53	8,503	213
<i>Bantay</i>	2	1	10	9	36	35
<i>Burgos</i>	1	-	82	-	233	-
<i>Caoayan</i>	3	-	203	-	806	-
<i>Galimuyod</i>	6	-	127	-	682	-
<i>Nagbukel</i>	1	-	63	-	231	-
<i>Narvacan</i>	7	-	263	-	1030	-
<i>Quirino (Angkaki)</i>	2	-	2	-	9	-
<i>San Emilio</i>	4	2	179	44	709	178
<i>San Esteban</i>	1	-	13	-	38	-
<i>San Idefonso</i>	1	-	21	-	75	-
<i>San Juan (Lapog)</i>	1	-	5	-	22	-
<i>San Vicente</i>	3	-	52	-	249	-
<i>Santa</i>	1	-	215	-	762	-
<i>Santa Catalina</i>	1	-	478	-	1878	-
<i>Santa Cruz</i>	1	-	1	-	5	-

REGION / PROVINCE / MUNICIPALITY	NUMBER OF EVACUATION CENTERS (ECs)		NUMBER OF DISPLACED				
			INSIDE ECs				
	CUM	NOW	Families		Persons		
				CUM	NOW	CUM	NOW
<i>Santiago</i>	4	-	205	-	656	-	
<i>Santo Domingo</i>	1	-	27	-	123	-	
<i>Suyo</i>	2	-	39	-	252	-	
<i>Tagudin</i>	5	-	105	-	375	-	
<i>CITY OF VIGAN (Capital)</i>	3	-	75	-	332	-	
La Union	10	-	2,682	-	10,939	-	
<i>Bacnotan</i>	1	-	4	-	11	-	
<i>Balaoan</i>	3	-	872	-	4,325	-	
<i>Bangar</i>	1	-	690	-	2,130	-	
<i>Luna</i>	5	-	1,116	-	4,473	-	
CAR	65	-	3,189	-	11,647	-	
Abra	42	-	2,665	-	9,452	-	
<i>Bangued (capital)</i>	4	-	245	-	1,398	-	
<i>Boliney</i>	4	-	22	-	63	-	
<i>Bucay</i>	14	-	1,323	-	4,621	-	
<i>Bucloc</i>	4	-	426	-	1,229	-	
<i>Danglas</i>	2	-	23	-	82	-	
<i>Lacub</i>	2	-	166	-	538	-	
<i>Licuan-Baay (Licuan)</i>	1	-	6	-	30	-	
<i>Luba</i>	1	-	2	-	4	-	
<i>Malibcong</i>	4	-	186	-	749	-	
<i>Penarrubia</i>	1	-	19	-	58	-	
<i>Sallapadan</i>	1	-	5	-	29	-	
<i>Tubo</i>	2	-	47	-	108	-	
<i>Villaviciosa</i>	2	-	195	-	543	-	
Benguet	6	-	35	-	122	-	
<i>Atok</i>	2	-	8	-	24	-	
<i>Bakun</i>	1	-	14	-	49	-	
<i>Buguias</i>	2	-	4	-	21	-	
<i>Kabayan</i>	1	-	9	-	28	-	
Kalinga	11	-	437	-	1,916	-	
<i>Lubuagan</i>	5	-	83	-	390	-	
<i>Pasil</i>	6	-	354	-	1,526	-	
Mountain Province	6	-	52	-	157	-	
<i>Bontoc (capital)</i>	2	-	2	-	6	-	
<i>Bauko</i>	1	-	10	-	14	-	
<i>Besao</i>	2	-	30	-	127	-	
<i>Tadian</i>	1	-	10	-	10	-	

Note: The LGUs of Bantay and San Emilio in Ilocos Sur shall provide the needs of the families/persons who are still staying in ECs.

Source: DSWD FOs

b. Outside Evacuation Center

There are **83 families** or **392 persons** temporarily staying with their relatives and/or friends in **Region I** (see Table 3).

Table 3. Number of Displaced Families / Persons Outside Evacuation Center

REGION / PROVINCE / MUNICIPALITY	NUMBER OF DISPLACED			
	OUTSIDE ECs			
	Families		Persons	
	CUM	NOW	CUM	NOW
GRAND TOTAL	45,729	83	168,953	392
REGION I	16,879	83	62,169	392
Ilocos Sur	15,956	83	59,013	392

REGION / PROVINCE / MUNICIPALITY	NUMBER OF DISPLACED			
	OUTSIDE ECs			
	Families		Persons	
	CUM	NOW	CUM	NOW
<i>Bantay</i>	220	1	1017	5
<i>Burgos</i>	18	-	43	-
CITY OF CANDON	5335	5	19042	17
<i>Caoayan</i>	2596	-	12863	-
<i>Galimuyod</i>	99	-	535	-
<i>Narvacan</i>	178	56	805	280
<i>San Emilio</i>	33	21	147	90
<i>San Esteban</i>	60	-	190	-
<i>Santa Catalina</i>	36	-	107	-
<i>Santa Cruz</i>	6779	-	22172	-
<i>Santiago</i>	504	-	1733	-
<i>Suyo</i>	2	-	13	-
<i>Tagudin</i>	96	-	346	-
La Union	921	-	3,145	-
<i>Balaoan</i>	34	-	129	-
<i>Bangar</i>	449	-	1,248	-
<i>Caba</i>	9	-	39	-
<i>Luna</i>	400	-	1,600	-
<i>Naguilian</i>	2	-	8	-
<i>Rosario</i>	2	-	15	-
CITY OF SAN FERNANDO (Capital)	13	-	45	-
<i>Santo Tomas</i>	6	-	25	-
<i>Sudipen</i>	6	-	36	-
Pangasinan	2	-	11	-
<i>Balungao</i>	1	-	5	-
<i>Malasiqui</i>	1	-	6	-
CAR	28,850	-	106,784	-
Abra	27,282	-	100,942	-
<i>Bangued (capital)</i>	895	-	3,706	-
<i>Bucay</i>	722	-	2,487	-
<i>Bucloc</i>	226	-	1,004	-
<i>Daguioman</i>	19	-	94	-
<i>Dolores</i>	108	-	446	-
<i>La Paz</i>	4,946	-	19,784	-
<i>Lacub</i>	13	-	48	-
<i>Lagangilang</i>	5,119	-	15,494	-
<i>Lagayan</i>	1,582	-	4,488	-
<i>Langiden</i>	622	-	1,734	-
<i>Licuan-Baay (Licuan)</i>	3	-	12	-
<i>Luba</i>	69	-	266	-
<i>Malibcong</i>	33	-	152	-
<i>Manabo</i>	45	-	229	-
<i>Penarrubia</i>	9	-	38	-
<i>Pidigan</i>	3,468	-	11,265	-
<i>Pilar</i>	457	-	1,594	-
<i>Sallapadan</i>	1,907	-	7,333	-
<i>San Isidro</i>	1,607	-	7,182	-
<i>San Juan</i>	194	-	648	-
<i>San Quintin</i>	213	-	622	-
<i>Tayum</i>	3,568	-	15,178	-
<i>Tineg</i>	1,031	-	5,646	-
<i>Tube</i>	27	-	92	-
<i>Villaviciosa</i>	399	-	1,400	-
Apayao	3	-	14	-

REGION / PROVINCE / MUNICIPALITY	NUMBER OF DISPLACED			
	OUTSIDE ECs			
	Families		Persons	
	CUM	NOW	CUM	NOW
<i>Conner</i>	3	-	14	-
Benguet	207	-	959	-
<i>Atok</i>	8	-	37	-
<i>Baguio City</i>	3	-	18	-
<i>Bakun</i>	15	-	82	-
<i>Bokod</i>	111	-	465	-
<i>Buguias</i>	15	-	87	-
<i>Kabayán</i>	7	-	18	-
<i>Kapangan</i>	10	-	45	-
<i>Mankayan</i>	15	-	75	-
<i>Tuba</i>	23	-	132	-
Ifugao	2	-	4	-
<i>Hingyon</i>	2	-	4	-
Kalinga	1,289	-	4,645	-
<i>Balbalan</i>	126	-	485	-
<i>Lubuagan</i>	910	-	3,268	-
<i>Pasil</i>	246	-	878	-
<i>Tinglayan</i>	1	-	1	-
<i>City of Tabuk (capital)</i>	6	-	13	-
Mountain Province	67	-	220	-
<i>Bontoc (capital)</i>	5	-	16	-
<i>Sadanga</i>	12	-	45	-
<i>Bauko</i>	17	-	72	-
<i>Besao</i>	16	-	48	-
<i>Sagada</i>	5	-	21	-
<i>Tadian</i>	12	-	18	-

Source: DSWD FOS

c. Total Displaced Population

There are **136 families** or **605 persons** still displaced in **Regions I** (see Table 4).

Table 4. Total Number of Displaced Families / Persons

REGION / PROVINCE / MUNICIPALITY	TOTAL DISPLACED			
	Families		Persons	
	CUM	NOW	CUM	NOW
GRAND TOTAL	53,765	136	200,042	605
REGION I	21,726	136	81,611	605
Ilocos Sur	18,121	136	67,516	605
<i>Bantay</i>	230	10	1053	40
<i>Burgos</i>	100	-	276	-
<i>CITY OF CANDON</i>	5335	5	19042	17
<i>Caoayan</i>	2799	-	13669	-
<i>Galimuyod</i>	226	-	1217	-
<i>Nagbukel</i>	63	-	231	-
<i>Narvacan</i>	441	56	1835	280
<i>Quirino (Angkaki)</i>	2	-	9	-
<i>San Emilio</i>	212	65	856	268
<i>San Esteban</i>	73	-	228	-
<i>San Ildefonso</i>	21	-	75	-
<i>San Juan (Lapog)</i>	5	-	22	-
<i>San Vicente</i>	52	-	249	-
<i>Santa</i>	215	-	762	-
<i>Santa Catalina</i>	514	-	1985	-

REGION / PROVINCE / MUNICIPALITY	TOTAL DISPLACED			
	Families		Persons	
	CUM	NOW	CUM	NOW
<i>Santa Cruz</i>	6780	-	22177	-
<i>Santiago</i>	709	-	2389	-
<i>Santo Domingo</i>	27	-	123	-
<i>Suyo</i>	41	-	265	-
<i>Tagudin</i>	201	-	721	-
<i>CITY OF VIGAN (Capital)</i>	75	-	332	-
La Union	3,603	-	14,084	-
<i>Bacnotan</i>	4	-	11	-
<i>Balaoan</i>	906	-	4,454	-
<i>Bangar</i>	1,139	-	3,378	-
<i>Caba</i>	9	-	39	-
<i>Luna</i>	1,516	-	6,073	-
<i>Naguilian</i>	2	-	8	-
<i>Rosario</i>	2	-	15	-
<i>CITY OF SAN FERNANDO (Capital)</i>	13	-	45	-
<i>Santo Tomas</i>	6	-	25	-
<i>Sudipen</i>	6	-	36	-
Pangasinan	2	-	11	-
<i>Balungao</i>	1	-	5	-
<i>Malasiqui</i>	1	-	6	-
CAR	32,039	-	118,431	-
Abra	29,947	-	110,394	-
<i>Bangued (capital)</i>	1,140	-	5,104	-
<i>Boliney</i>	22	-	63	-
<i>Bucay</i>	2,045	-	7,108	-
<i>Bucloc</i>	652	-	2,233	-
<i>Daguioman</i>	19	-	94	-
<i>Danglas</i>	23	-	82	-
<i>Dolores</i>	108	-	446	-
<i>La Paz</i>	4,946	-	19,784	-
<i>Lacub</i>	179	-	586	-
<i>Lagangilang</i>	5,119	-	15,494	-
<i>Lagayan</i>	1,582	-	4,488	-
<i>Langiden</i>	622	-	1,734	-
<i>Licuan-Baay (Licuan)</i>	9	-	42	-
<i>Luba</i>	71	-	270	-
<i>Malibcong</i>	219	-	901	-
<i>Manabo</i>	45	-	229	-
<i>Penarrubia</i>	28	-	96	-
<i>Pidigan</i>	3,468	-	11,265	-
<i>Pilar</i>	457	-	1,594	-
<i>Sallapadan</i>	1,912	-	7,362	-
<i>San Isidro</i>	1,607	-	7,182	-
<i>San Juan</i>	194	-	648	-
<i>San Quintin</i>	213	-	622	-
<i>Tayum</i>	3,568	-	15,178	-
<i>Tineg</i>	1,031	-	5,646	-
<i>Tube</i>	74	-	200	-
<i>Villaviciosa</i>	594	-	1,943	-
Apayao	3	-	14	-
<i>Conner</i>	3	-	14	-
Benguet	242	-	1,081	-
<i>Atok</i>	16	-	61	-
<i>Baguio City</i>	3	-	18	-
<i>Bakun</i>	29	-	131	-

REGION / PROVINCE / MUNICIPALITY	TOTAL DISPLACED			
	Families		Persons	
	CUM	NOW	CUM	NOW
<i>Bokod</i>	111	-	465	-
<i>Buguias</i>	19	-	108	-
<i>Kabayán</i>	16	-	46	-
<i>Kapangan</i>	10	-	45	-
<i>Mankayan</i>	15	-	75	-
<i>Tuba</i>	23	-	132	-
Ifugao	2	-	4	-
<i>Hingyon</i>	2	-	4	-
Kalinga	1,726	-	6,561	-
<i>Balbalan</i>	126	-	485	-
<i>Lubuagan</i>	993	-	3,658	-
<i>Pasil</i>	600	-	2,404	-
<i>Tinglayan</i>	1	-	1	-
<i>City of Tabuk (capital)</i>	6	-	13	-
Mountain Province	119	-	377	-
<i>Bontoc (capital)</i>	7	-	22	-
<i>Sadanga</i>	12	-	45	-
<i>Bauko</i>	27	-	86	-
<i>Besao</i>	46	-	175	-
<i>Sagada</i>	5	-	21	-
<i>Tadian</i>	22	-	28	-

Source: DSWD FOs

IV. Damaged Houses

A total of **36,312 houses** were damaged; of which, **919** are **totally damaged** and **35,393** are **partially damaged** in **Regions I, II, and CAR** (see Table 5).

Table 5. Number of Damaged Houses

REGION / PROVINCE / MUNICIPALITY	NO. OF DAMAGED HOUSES		
	Total	Totally	Partially
GRAND TOTAL	36,312	919	35,393
REGION I	8,224	227	7,997
Ilocos Norte	37	-	37
<i>Badoc</i>	20	-	20
<i>CITY OF BATAV</i>	3	-	3
<i>Dingras</i>	2	-	2
<i>Marcos</i>	1	-	1
<i>Pinili</i>	10	-	10
<i>Sarrat</i>	1	-	1
Ilocos Sur	7,584	219	7,365
<i>Alilem</i>	34	-	34
<i>Banayoyo</i>	301	5	296
<i>Bantay</i>	215	1	214
<i>Burgos</i>	61	-	61
<i>Cabugao</i>	183	1	182
<i>CITY OF CANDON</i>	256	8	248
<i>Caoayan</i>	260	12	248
<i>Cervantes</i>	286	1	285
<i>Galimuyod</i>	97	6	91
<i>Gregorio del Pilar (Concepcion)</i>	177	-	177
<i>Lidlidda</i>	47	-	47
<i>Magsingal</i>	250	15	235
<i>Nagbukel</i>	238	11	227

REGION / PROVINCE / MUNICIPALITY	NO. OF DAMAGED HOUSES		
	Total	Totally	Partially
<i>Narvacan</i>	256	17	239
<i>Quirino (Angkaki)</i>	91	2	89
<i>Salcedo (Baugen)</i>	327	3	324
<i>San Emilio</i>	336	90	246
<i>San Esteban</i>	81	-	81
<i>San Ildefonso</i>	46	1	45
<i>San Juan (Lapog)</i>	113	3	110
<i>San Vicente</i>	10	-	10
<i>Santa</i>	152	4	148
<i>Santa Catalina</i>	40	-	40
<i>Santa Cruz</i>	1556	5	1551
<i>Santa Lucia</i>	579	5	574
<i>Santa Maria</i>	149	2	147
<i>Santiago</i>	143	4	139
<i>Santo Domingo</i>	225	11	214
<i>Sigay</i>	9	-	9
<i>Sinait</i>	14	2	12
<i>Sugpon</i>	92	-	92
<i>Suyo</i>	78	-	78
<i>Tagudin</i>	200	7	193
<i>CITY OF VIGAN (Capital)</i>	682	3	679
La Union	596	8	588
<i>Agoo</i>	2	-	2
<i>Bacnotan</i>	49	-	49
<i>Balaoan</i>	25	1	24
<i>Bangar</i>	169	-	169
<i>Bauang</i>	33	1	32
<i>Caba</i>	9	-	9
<i>Luna</i>	62	-	62
<i>Naguilian</i>	78	4	74
<i>Rosario</i>	2	-	2
<i>CITY OF SAN FERNANDO (Capital)</i>	13	-	13
<i>San Juan</i>	49	2	47
<i>Santo Tomas</i>	6	-	6
<i>Santol</i>	5	-	5
<i>Sudipen</i>	94	-	94
Pangasinan	7	-	7
<i>Balungao</i>	4	-	4
<i>Malasiqui</i>	1	-	1
<i>Sison</i>	1	-	1
<i>Villasis</i>	1	-	1
REGION II	1	-	1
Cagayan	1	-	1
<i>Aparri</i>	1	-	1
CAR	28,087	692	27,395
Abra	23,908	589	23,319
<i>Bangued (capital)</i>	4,500	140	4,360
<i>Boliney</i>	91	1	90
<i>Bucay</i>	1,331	108	1,223
<i>Bucloc</i>	260	-	260
<i>Daguioman</i>	19	-	19
<i>Danglas</i>	386	16	370
<i>Dolores</i>	886	20	866
<i>La Paz</i>	1,165	15	1,150
<i>Lacub</i>	125	-	125
<i>Lagangilang</i>	2,583	4	2,579

REGION / PROVINCE / MUNICIPALITY	NO. OF DAMAGED HOUSES		
	Total	Totally	Partially
Lagayan	245	3	242
Langiden	413	11	402
Licuan-Baay (Licuan)	340	3	337
Luba	398	14	384
Malibcong	119	-	119
Manabo	1,080	6	1,074
Penarrubia	900	34	866
Pidigan	1,774	90	1,684
Pilar	672	2	670
Sallapadan	682	12	670
San Isidro	353	-	353
San Juan	1,890	9	1,881
San Quintin	612	46	566
Tayum	2,230	28	2,202
Tineg	13	-	13
Tube	344	3	341
Villaviciosa	497	24	473
Apayao	87	1	86
Conner	87	1	86
Benguet	821	53	768
Atok	20	1	19
Baguio City	5	-	5
Bakun	105	3	102
Buguias	102	11	91
Itogon	16	1	15
Kabayan	152	9	143
Kapangan	143	4	139
Kibungan	154	17	137
La Trinidad (capital)	20	1	19
Mankayan	98	5	93
Sablan	1	1	-
Tublay	5	-	5
Ifugao	221	2	219
Asipulo	5	-	5
Banaue	68	-	68
Hingyon	14	1	13
Kiangan	62	-	62
Lagawe (capital)	17	1	16
Tinoc	55	-	55
Kalinga	531	10	521
Balbalan	64	1	63
Lubuagan	170	5	165
Pasil	295	4	291
City of Tabuk (capital)	2	-	2
Mountain Province	2,519	37	2,482
Bontoc (capital)	168	7	161
Sadanga	49	12	37
Bauko	1,192	9	1,183
Besao	129	5	124
Sabangan	502	-	502
Sagada	68	-	68
Tadian	411	4	407

Source: DSWD FOs

V. Cost of Humanitarian Assistance Provided

A total of **₱161,748,908.06** worth of assistance was provided to the affected families; of which, **₱108,409,432.36** from **DSWD**, **₱27,072,238.17** from **Local Government Units (LGUs)**, **₱17,187,480.64** from **Non-Government Organizations (NGOs)**, and **₱9,079,756.89** from **other Partners** (see Table 6).

Table 6. Cost of Assistance Provided to Affected Families / Persons

REGION / PROVINCE / MUNICIPALITY	COST OF ASSISTANCE				
	DSWD	LGU	NGOs	OTHERS	GRAND TOTAL
GRAND TOTAL	108,409,432.36	27,072,238.17	17,187,480.64	9,079,756.89	161,748,908.06
REGION I	13,230,850.50	1,721,143.63	5,337,756.74	105,000.00	20,394,750.87
Ilocos Norte	-	12,850.00	-	-	12,850.00
Dingras	-	2,000.00	-	-	2,000.00
Pinili	-	10,450.00	-	-	10,450.00
Sarrat	-	400.00	-	-	400.00
Ilocos Sur	13,230,850.50	1,478,245.63	5,294,256.74	105,000.00	20,108,352.87
Province	1,246,750.00	-	4,327,407.76	-	5,574,157.76
Bantay	379,244.50	44,144.00	-	-	423,388.50
Burgos	283,466.00	26,788.50	5,000.00	25,000.00	340,254.50
CITY OF CANDON	-	250,750.00	340,000.00	-	590,750.00
Caoayan	2,502,246.00	34,210.00	111,896.47	-	2,648,352.47
Cervantes	774,965.00	58,000.00	-	-	832,965.00
Narvacan	3,005,381.50	96,000.00	202,163.84	-	3,303,545.34
Quirino (Angkaki)	51,510.00	33,400.00	-	-	84,910.00
Salcedo (Baugen)	-	248,000.00	-	-	248,000.00
San Emilio	2,087,902.50	200,000.00	282,800.67	-	2,570,703.17
San Esteban	1,455,852.50	41,000.00	-	-	1,496,852.50
San Ildefonso	-	2,086.38	-	-	2,086.38
Santa	1,151,182.50	100,000.00	-	-	1,251,182.50
Santa Lucia	-	27,000.00	-	-	27,000.00
Santiago	-	194,000.00	-	-	194,000.00
Santo Domingo	121,500.00	80,866.75	-	-	202,366.75
Suyo	-	13,000.00	-	80,000.00	93,000.00
CITY OF VIGAN (Capital)	170,850.00	29,000.00	24,988.00	-	224,838.00
La Union	-	218,568.00	43,500.00	-	262,068.00
Province	-	-	43,500.00	-	43,500.00
Balaoan	-	6,000.00	-	-	6,000.00
Bangar	-	159,570.00	-	-	159,570.00
Caba	-	6,300.00	-	-	6,300.00
Luna	-	13,500.00	-	-	13,500.00
Rosario	-	2,380.00	-	-	2,380.00
CITY OF SAN FERNANDO (Capital)	-	15,418.00	-	-	15,418.00
San Juan	-	12,400.00	-	-	12,400.00
Santo Tomas	-	3,000.00	-	-	3,000.00
Pangasinan	-	11,480.00	-	-	11,480.00
Balungao	-	8,000.00	-	-	8,000.00
Malasiqui	-	2,260.00	-	-	2,260.00
Villasis	-	1,220.00	-	-	1,220.00
REGION II	5,853.50	-	-	-	5,853.50
Cagayan	5,853.50	-	-	-	5,853.50
Aparri	5,853.50	-	-	-	5,853.50
CAR	95,172,728.36	25,351,094.54	11,849,723.90	8,974,756.89	141,348,303.69
Abra	81,281,724.90	24,196,222.19	11,849,723.90	7,406,954.09	124,734,625.08

REGION / PROVINCE / MUNICIPALITY	COST OF ASSISTANCE				GRAND TOTAL
	DSWD	LGU	NGOs	OTHERS	
<i>Bangued (capital)</i>	12,950,923.45	5,481,150.00	50,000.00	-	18,482,073.45
<i>Boliney</i>	1,863,416.25	1,457,604.00	230,300.00	-	3,551,320.25
<i>Bucay</i>	5,213,690.70	1,974,376.40	1,624,485.00	2,880,502.86	11,693,054.96
<i>Bucloc</i>	2,104,828.75	508,600.00	50,000.00	-	2,663,428.75
<i>Daguiooman</i>	553,331.30	527,228.00	210,003.00	225,000.00	1,515,562.30
<i>Danglas</i>	1,863,876.15	536,800.00	50,000.00	121,520.00	2,572,196.15
<i>Dolores</i>	2,785,030.00	683,000.00	70,000.00	-	3,538,030.00
<i>La Paz</i>	4,270,306.30	45,000.00	50,000.00	-	4,365,306.30
<i>Lacub</i>	1,164,720.25	197,150.00	50,000.00	-	1,411,870.25
<i>Lagangilang</i>	4,330,714.25	1,769,850.00	922,250.00	-	7,022,814.25
<i>Lagayan</i>	1,322,150.75	692,381.08	50,000.00	-	2,064,531.83
<i>Langiden</i>	1,495,240.30	667,570.00	145,265.00	641,308.00	2,949,383.30
<i>Licuan-Baay (Licuan)</i>	1,383,505.40	684,800.00	50,000.00	407,750.00	2,526,055.40
<i>Luba</i>	1,664,644.00	577,180.00	347,970.00	1,209,945.00	3,799,739.00
<i>Malibcong</i>	2,013,018.00	601,107.00	50,000.00	-	2,664,125.00
<i>Manabo</i>	2,437,199.75	10,400.00	50,000.00	-	2,497,599.75
<i>Penarrubia</i>	1,585,623.60	602,760.00	50,000.00	-	2,238,383.60
<i>Pidigan</i>	3,635,429.25	614,639.56	1,299,987.00	-	5,550,055.81
<i>Pilar</i>	3,645,431.00	1,777,035.00	67,999.90	-	5,490,465.90
<i>Sallapadan</i>	2,220,676.75	3,750.00	50,000.00	-	2,274,426.75
<i>San Isidro</i>	1,663,997.50	65,000.00	50,000.00	230,580.00	2,009,577.50
<i>San Juan</i>	3,790,474.60	618,630.00	2,034,000.00	-	6,443,104.60
<i>San Quintin</i>	5,043,167.05	739,934.19	237,500.00	368,608.30	6,389,209.54
<i>Tayum</i>	6,614,964.50	488,608.00	2,738,070.00	405,450.00	10,247,092.50
<i>Tineg</i>	1,368,753.50	1,575,853.00	50,000.00	-	2,994,606.50
<i>Tabo</i>	1,440,627.00	529,000.00	301,090.00	916,289.93	3,187,006.93
<i>Villaviciosa</i>	2,855,984.55	766,815.96	970,804.00	-	4,593,604.51
Apayao	22,713.24	155,340.00	-	-	178,053.24
<i>Conner</i>	22,713.24	155,340.00	-	-	178,053.24
Benguet	7,940,118.00	76,434.00	-	8,000.00	8,024,552.00
<i>Atok</i>	127,170.00	43,498.00	-	-	170,668.00
<i>Bakun</i>	589,692.00	-	-	-	589,692.00
<i>Bokod</i>	164,850.00	-	-	-	164,850.00
<i>Buguias</i>	240,681.00	-	-	-	240,681.00
<i>Itogon</i>	-	32,936.00	-	-	32,936.00
<i>Kabayan</i>	1,547,235.00	-	-	-	1,547,235.00
<i>Kapangan</i>	2,058,741.00	-	-	-	2,058,741.00
<i>Kibungan</i>	2,874,984.00	-	-	-	2,874,984.00
<i>La Trinidad (capital)</i>	-	-	-	8,000.00	8,000.00
<i>Mankayan</i>	336,765.00	-	-	-	336,765.00
Ifugao	164,205.75	219,780.00	-	-	383,985.75
<i>Asipulo</i>	6,738.80	-	-	-	6,738.80
<i>Banaue</i>	-	4,780.00	-	-	4,780.00
<i>Hingyon</i>	24,977.39	-	-	-	24,977.39
<i>Kiangan</i>	56,790.98	-	-	-	56,790.98
<i>Lagawe (capital)</i>	26,984.42	-	-	-	26,984.42
<i>Tinoc</i>	48,714.16	215,000.00	-	-	263,714.16
Kalinga	2,879,767.62	432,055.00	-	1,559,802.80	4,871,625.42
<i>Balbalan</i>	219,170.84	98,840.00	-	328,010.80	646,021.64
<i>Lubuagan</i>	1,834,606.94	267,620.00	-	510,901.00	2,613,127.94
<i>Pasil</i>	825,989.84	65,595.00	-	720,891.00	1,612,475.84
Mountain Province	2,884,198.85	271,263.35	-	-	3,155,462.20
<i>Bontoc (capital)</i>	291,550.00	234,600.00	-	-	526,150.00
<i>Sadanga</i>	134,040.00	-	-	-	134,040.00
<i>Bauko</i>	635,631.50	-	-	-	635,631.50
<i>Besao</i>	342,538.00	25,830.00	-	-	368,368.00

REGION / PROVINCE / MUNICIPALITY	COST OF ASSISTANCE				GRAND TOTAL
	DSWD	LGU	NGOs	OTHERS	
<i>Sabangan</i>	870,157.50	-	-	-	870,157.50
<i>Sagada</i>	169,050.00	10,033.35	-	-	179,083.35
<i>Tadian</i>	441,231.85	800.00	-	-	442,031.85

Source: DSWD FOs

This terminal report is based on the final report submitted by DSWD FO I [09 November 2022], DSWD FO II [10 August 2022], and DSWD FO CAR [06 December 2022]. The Disaster Response Operations Monitoring and Information Center (DROMIC) of DSWD-DRMB continues to closely coordinate with DSWD FOs for any request of Technical Assistance and Resource Augmentation (TARA).

Prepared by:

AARON JOHN B. PASCUA
MARIE JOYCE G. RAFANAN

Reviewed by:

MARC LEO L. BUTAC
 DROMIC-DIMS

Released by:

KRYSTIAN HAROLD J. JAVIER
 Officer-in-Charge, DROMIC