

## DSWD DROMIC Report #8 on the Mw 6.4 Earthquake Incident in Lagayan, Abra

as of 05 November 2022, 6PM

### I. Situation Overview

On 25 October 2022 at 10:59 PM, a 6.4 magnitude earthquake jolted the Municipality of Lagayan (Abra) (17.79°N, 120.66°E - 009 km N 33°W) with a tectonic origin and a depth of focus of 11 km. The earthquake was also felt in the neighboring municipalities.

<b>Date/Time:</b>	25 Oct 2022 - 10:59:01 PM
<b>Reported Intensities:</b>	<p>Intensity VI - La Paz, Abra</p> <p>Intensity V - Bangued, Boliney, Bucay, Bucloc, Daguioman, Danglas, Dolores, Lacub, Lagangilang, Lagayan, Langiden, Licuan-Baay, Luba, Malibcong, Manabo, Peñarrubia, Pidigan, Pilar, Sallapadan, San Isidro, San Juan, San Quintin, Tayum, Tineg, Tubo, and Villaviciosa, Abra; Conner, Apayao; La Trinidad, Benguet; Rizal, Kalinga; Alilem, Banayoyo, Bantay, Burgos, Cabugao, City of Candon, Cervantes, Galimuyod, Gregorio del Pilar, Lidlidda, Magsingal, Nagbukel, Narvacan, Quirino, Salcedo, San Emilio, San Esteban, San Ildefonso, San Juan, San Vicente, Santa, Santa Catalina, Santa Cruz, Santa Lucia, Santa Maria, Santiago, Santo Domingo, Sigay, Sinit, Sugpon, Suyo, Tagudin, and City of Vigan, Ilocos Sur; Bacnotan, Balaoan, Bauang, and Caba, La Union; Abulug, Allacapan, Amulung, Aparri, Baggao, Claveria, Lal-Lo, Lasam, Peñablanca, Tuao, and Tuguegarao City, Cagayan</p> <p>Intensity IV - Flora, Apayao; City of Baguio; Bokod, and Itogon, Benguet; City of San Fernando, and Sudipen, La Union; Enrile, Iguig, and Solana, Cagayan</p> <p>Intensity III - Laoac, City of Urdaneta, and Villasis, Pangasinan; City of Dagupan; Baler, Aurora</p> <p>Intensity II - Labrador, Pangasinan; San Manuel, Isabela</p> <p>Instrumental Intensities:</p> <p>Intensity V - Gonzaga, Penablanca, Claveria, Cagayan; Pasuquin, Laoag City, Ilocos Norte; Vigan City, Ilocos Sur</p> <p>Intensity IV - Bangued, Abra</p> <p>Intensity III - Baler, Aurora; Ilagan, Isabela</p> <p>Intensity II - Bayombong, Nueva Vizcaya; Urdaneta, Dagupan City, Pangasinan; Madella, Quirino</p> <p>Intensity I - Dinalupihan, Bataan; Bulakan, Calumpit, Malolos City, Plaridel, Bulacan; Pasig City, Navotas City; Cabanatuan City and San Jose, Nueva Ecija;</p> <p>Guagua, Pampanga; Umingan, Sison, Bolinao, Infanta, and Bani, Pangasinan; Polillo, Mauban, and Infanta, Quezon; Tanay and Taytay, Rizal; Ramos, Tarlac;</p> <p>Iba, Zambales</p>
<b>Expecting Damage:</b>	YES
<b>Expecting Aftershocks:</b>	YES

*Source: DOST-PHIVOLCS Earthquake Bulletin*

## II. Status of Affected Areas and Population

A total of **57,229 families** or **191,166 persons** are affected in **544 barangays** in **Regions I, II, and CAR** (see Table 1).

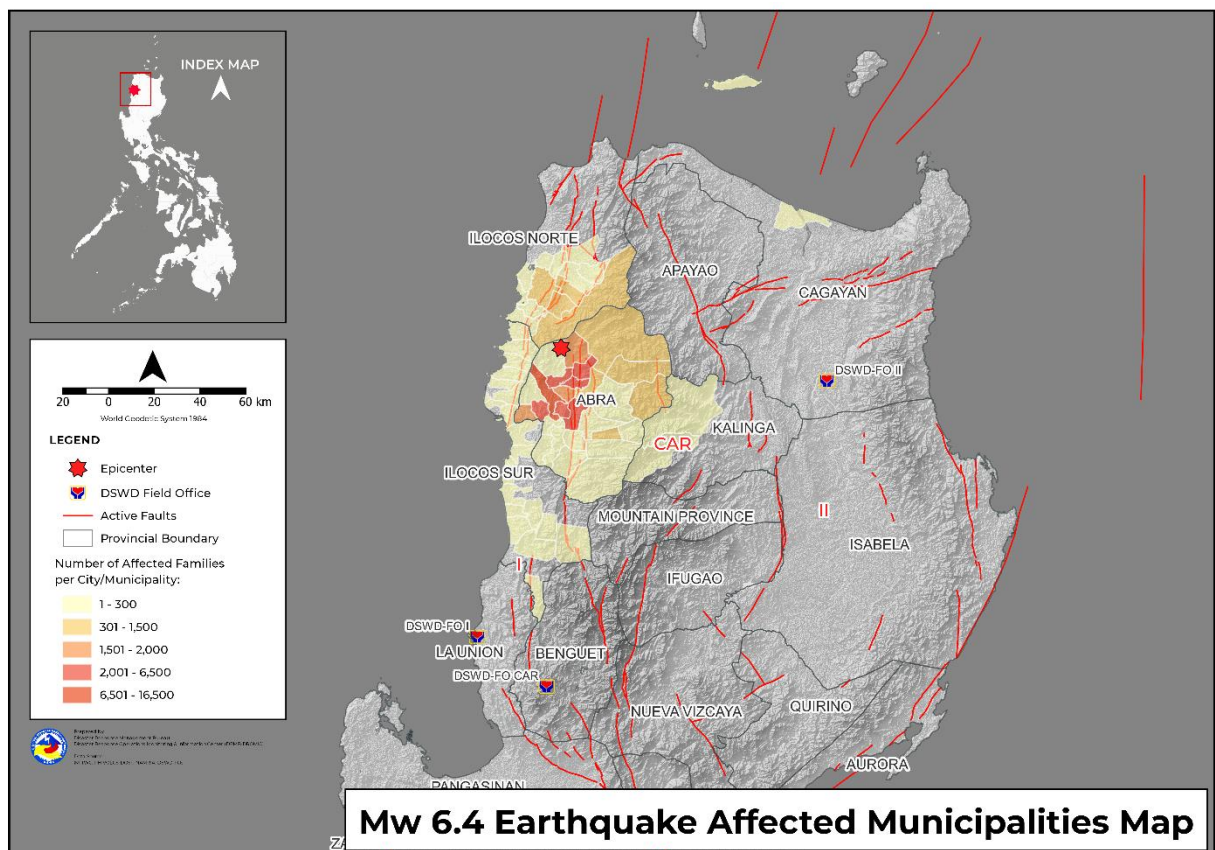
**Table 1. Number of Affected Families / Persons**

REGION / PROVINCE / MUNICIPALITY	NUMBER OF AFFECTED		
	Barangays	Families	Persons
<b>GRAND TOTAL</b>	<b>544</b>	<b>57,229</b>	<b>191,166</b>
<b>REGION I</b>	<b>280</b>	<b>4,083</b>	<b>17,136</b>
<b>Ilocos Norte</b>	<b>156</b>	<b>3,280</b>	<b>13,841</b>
<i>Badoc</i>	15	93	376
<i>Banna (Espiritu)</i>	20	678	2761
<i>CITY OF BATAC</i>	35	385	1677
<i>Currimao</i>	4	4	20
<i>Dingras</i>	21	154	770
<i>Marcos</i>	13	922	3070
<i>Nueva Era</i>	11	909	4545
<i>Paoay</i>	1	1	5
<i>Piddig</i>	2	2	10
<i>Pinili</i>	17	52	206
<i>San Nicolas</i>	7	44	253
<i>Sarrat</i>	1	1	10
<i>Solsona</i>	9	35	138
<b>Ilocos Sur</b>	<b>124</b>	<b>803</b>	<b>3,295</b>
<i>Bantay</i>	3	46	211
<i>Cabugao</i>	10	148	534
<i>CITY OF CANDON</i>	1	1	1
<i>Cervantes</i>	2	8	42
<i>Magsingal</i>	21	293	1212
<i>Narvacan</i>	3	4	13
<i>Salcedo (Baugen)</i>	4	9	36
<i>San Esteban</i>	3	18	68
<i>San Juan (Lapog)</i>	16	51	204
<i>Santa</i>	2	3	21
<i>Santa Catalina</i>	2	8	35
<i>Santa Cruz</i>	4	8	29
<i>Santa Lucia</i>	2	4	14
<i>Santa Maria</i>	4	15	48
<i>Santiago</i>	4	34	157
<i>Santo Domingo</i>	7	31	127
<i>Sigay</i>	1	1	2
<i>Sinait</i>	13	45	202
<i>Sugpon</i>	2	10	32
<i>Suyo</i>	3	19	75
<i>CITY OF VIGAN (Capital)</i>	17	47	232
<b>REGION II</b>	<b>1</b>	<b>1</b>	<b>3</b>
<b>Cagayan</b>	<b>1</b>	<b>1</b>	<b>3</b>
<i>Aparri</i>	1	1	3
<b>CAR</b>	<b>263</b>	<b>53,145</b>	<b>174,027</b>
<b>Abra</b>	<b>258</b>	<b>53,115</b>	<b>173,874</b>
<i>Bangued (capital)</i>	31	16,242	52,463
<i>Boliney</i>	1	1	5
<i>Bucay</i>	21	6,226	21,125
<i>Bucloc</i>	4	726	2,599
<i>Daguioman</i>	1	1	4

REGION / PROVINCE / MUNICIPALITY	NUMBER OF AFFECTED		
	Barangays	Families	Persons
Danglas	6	165	533
Dolores	15	3,843	12,248
La Paz	12	5,228	15,684
Lacub	6	1,241	5,687
Lagangilang	17	700	1,905
Lagayan	5	1,640	4,488
Langiden	5	12	55
Licuan-Baay (Licuan)	10	47	204
Luba	6	58	235
Malibcong	12	1,161	4,534
Manabo	5	46	178
Penarrubia	8	2,210	7,387
Pidigan	15	3,848	12,511
Pilar	6	13	50
Sallapadan	6	109	351
San Isidro	9	208	639
San Juan	19	3,967	11,906
San Quintin	6	1,862	5,705
Tayum	10	1,983	6,880
Tineg	10	1,288	5,646
Tube	4	52	167
Villaviciosa	8	238	685
<b>Kalinga</b>	<b>5</b>	<b>30</b>	<b>153</b>
Balbalan	3	3	16
Pasil	2	27	137

Note: Ongoing assessment and validation being conducted.

Source: DSWD FOs



### III. Status of Displaced Population

#### a. Inside Evacuation Center

There are **23 families** or **79 persons** currently taking temporary shelter in **three (3) evacuation centers** in **Regions I** and **CAR** (see Table 2).

**Table 2. Number of Displaced Families / Persons Inside Evacuation Center**

REGION / PROVINCE / MUNICIPALITY	NUMBER OF EVACUATION CENTERS (ECs)		NUMBER OF DISPLACED INSIDE ECs			
			Families		Persons	
	CUM	NOW	CUM	NOW	CUM	NOW
<b>GRAND TOTAL</b>	<b>3</b>	<b>3</b>	<b>23</b>	<b>23</b>	<b>79</b>	<b>79</b>
<b>REGION I</b>	<b>1</b>	<b>1</b>	<b>10</b>	<b>10</b>	<b>36</b>	<b>36</b>
<b>Ilocos Sur</b>	<b>1</b>	<b>1</b>	<b>10</b>	<b>10</b>	<b>36</b>	<b>36</b>
<i>Bantay</i>	1	1	10	10	36	36
<b>CAR</b>	<b>2</b>	<b>2</b>	<b>13</b>	<b>13</b>	<b>43</b>	<b>43</b>
<b>Abra</b>	<b>2</b>	<b>2</b>	<b>13</b>	<b>13</b>	<b>43</b>	<b>43</b>
<i>San Juan</i>	1	1	2	2	8	8
<i>Villaviciosa</i>	1	1	11	11	35	35

Note: Ongoing assessment and validation being conducted.

Source: DSWD FOs

#### b. Outside Evacuation Center

There are **333 families** or **957 persons** temporarily staying with their relatives or friends in **Regions I** and **CAR** (see Table 3).

**Table 3. Number of Displaced Families / Persons Outside Evacuation Center**

REGION / PROVINCE / MUNICIPALITY	NUMBER OF DISPLACED OUTSIDE ECs			
	Families		Persons	
	CUM	NOW	CUM	NOW
<b>GRAND TOTAL</b>	<b>1,316</b>	<b>333</b>	<b>4,715</b>	<b>957</b>
<b>REGION I</b>	<b>14</b>	<b>12</b>	<b>66</b>	<b>60</b>
<b>Ilocos Norte</b>	<b>13</b>	<b>12</b>	<b>65</b>	<b>60</b>
<i>Marcos</i>	2	1	10	5
<i>Nueva Era</i>	11	11	55	55
<b>Ilocos Sur</b>	<b>1</b>	<b>-</b>	<b>1</b>	<b>-</b>
<i>Cabugao</i>	1	-	1	-
<b>CAR</b>	<b>1,302</b>	<b>321</b>	<b>4,649</b>	<b>897</b>
<b>Abra</b>	<b>1,275</b>	<b>321</b>	<b>4,518</b>	<b>897</b>
<i>Bangued</i>	36	-	140	-
<i>La Paz</i>	886	-	3,359	-
<i>Licuan-Baay (Licuan)</i>	3	-	12	-
<i>Penarrubia</i>	2	1	5	2
<i>Pidigan</i>	6	-	27	-
<i>San Juan</i>	289	289	801	801
<i>Tineg</i>	1	-	7	-
<i>Tube</i>	52	31	167	94
<b>Kalinga</b>	<b>27</b>	<b>-</b>	<b>131</b>	<b>-</b>
<i>Pasil</i>	27	-	131	-

Note: Ongoing assessment and validation being conducted.

Source: DSWD FOs

### c. Total Displaced Population

There are **356 families** or **1,036 persons** displaced in **Regions I** and **CAR** (see Table 4).

**Table 4. Total Number of Displaced Families / Persons**

REGION / PROVINCE / MUNICIPALITY	TOTAL DISPLACED			
	Families		Persons	
	CUM	NOW	CUM	NOW
<b>GRAND TOTAL</b>	<b>1,339</b>	<b>356</b>	<b>4,794</b>	<b>1,036</b>
<b>REGION I</b>	<b>24</b>	<b>22</b>	<b>102</b>	<b>96</b>
<b>Ilocos Norte</b>	<b>13</b>	<b>12</b>	<b>65</b>	<b>60</b>
<i>Marcos</i>	2	1	10	5
<i>Nueva Era</i>	11	11	55	55
<b>Ilocos Sur</b>	<b>11</b>	<b>10</b>	<b>37</b>	<b>36</b>
<i>Bantay</i>	10	10	36	36
<i>Cabugao</i>	1	-	1	-
<b>CAR</b>	<b>1,315</b>	<b>334</b>	<b>4,692</b>	<b>940</b>
<b>Abra</b>	<b>1,288</b>	<b>334</b>	<b>4,561</b>	<b>940</b>
<i>Bangued</i>	36	-	140	-
<i>La Paz</i>	886	-	3,359	-
<i>Licuan-Baay (Licuan)</i>	3	-	12	-
<i>Penarrubia</i>	2	1	5	2
<i>Pidigan</i>	6	-	27	-
<i>San Juan</i>	291	291	809	809
<i>Tineg</i>	1	-	7	-
<i>Tube</i>	52	31	167	94
<i>Villaviciosa</i>	11	11	35	35
<b>Kalinga</b>	<b>27</b>	<b>-</b>	<b>131</b>	<b>-</b>
<i>Pasil</i>	27	-	131	-

Note: Ongoing assessment and validation being conducted.

Source: DSWD FOs

## IV. Damaged Houses

A total of **13,802 houses** were damaged; of which, **443** are **totally damaged** and **13,359** are **partially damaged** in **Regions I, II,** and **CAR** (see Table 5).

**Table 5. Number of Damaged Houses**

REGION / PROVINCE / MUNICIPALITY	NO. OF DAMAGED HOUSES		
	Total	Totally	Partially
<b>GRAND TOTAL</b>	<b>13,802</b>	<b>443</b>	<b>13,359</b>
<b>REGION I</b>	<b>3,671</b>	<b>427</b>	<b>3,244</b>
<b>Ilocos Norte</b>	<b>2,903</b>	<b>421</b>	<b>2,482</b>
<i>Badoc</i>	93	-	93
<i>Banna (Espiritu)</i>	658	1	657
<i>CITY OF BATAV</i>	245	-	245
<i>Currimao</i>	4	-	4
<i>Dingras</i>	116	8	108
<i>Marcos</i>	918	391	527
<i>Nueva Era</i>	734	21	713
<i>Paoay</i>	1	-	1
<i>Piddig</i>	2	-	2
<i>Pinili</i>	52	-	52
<i>San Nicolas</i>	44	-	44
<i>Sarrat</i>	1	-	1
<i>Solsona</i>	35	-	35

REGION / PROVINCE / MUNICIPALITY	NO. OF DAMAGED HOUSES		
	Total	Totally	Partially
<b>Ilocos Sur</b>	<b>768</b>	<b>6</b>	<b>762</b>
<i>Bantay</i>	36	-	36
<i>Cabugao</i>	124	1	123
<i>CITY OF CANDON</i>	1	-	1
<i>Cervantes</i>	8	-	8
<i>Magsingal</i>	292	-	292
<i>Narvacan</i>	4	-	4
<i>Salcedo (Baugen)</i>	9	-	9
<i>San Esteban</i>	18	-	18
<i>San Juan (Lapog)</i>	51	-	51
<i>Santa</i>	3	-	3
<i>Santa Catalina</i>	8	-	8
<i>Santa Cruz</i>	8	-	8
<i>Santa Lucia</i>	4	-	4
<i>Santa Maria</i>	15	-	15
<i>Santiago</i>	34	-	34
<i>Santo Domingo</i>	31	-	31
<i>Sigay</i>	1	-	1
<i>Sinait</i>	45	5	40
<i>Sugpon</i>	10	-	10
<i>Suyo</i>	19	-	19
<i>CITY OF VIGAN (Capital)</i>	47	-	47
<b>REGION II</b>	<b>1</b>	<b>1</b>	<b>-</b>
<b>Cagayan</b>	<b>1</b>	<b>1</b>	<b>-</b>
<i>Aparri</i>	1	1	-
<b>CAR</b>	<b>10,130</b>	<b>15</b>	<b>10,115</b>
<b>Abra</b>	<b>10,104</b>	<b>15</b>	<b>10,089</b>
<i>Bangued (capital)</i>	51	-	51
<i>Boliney</i>	1	-	1
<i>Bucay</i>	1,453	-	1,453
<i>Bucloc</i>	44	-	44
<i>Danglas</i>	131	-	131
<i>Dolores</i>	916	-	916
<i>La Paz</i>	887	-	887
<i>Lacub</i>	272	-	272
<i>Lagangilang</i>	700	-	700
<i>Lagayan</i>	580	5	575
<i>Langiden</i>	12	2	10
<i>Licuan-Baay (Licuan)</i>	34	-	34
<i>Luba</i>	55	-	55
<i>Malibcong</i>	196	-	196
<i>Manabo</i>	8	-	8
<i>Penarrubia</i>	390	-	390
<i>Pidigan</i>	206	7	199
<i>Pilar</i>	11	-	11
<i>Sallapadan</i>	80	-	80
<i>San Isidro</i>	208	-	208
<i>San Juan</i>	1,137	-	1,137
<i>San Quintin</i>	428	-	428
<i>Tayum</i>	1,983	-	1,983
<i>Tineg</i>	121	1	120
<i>Villaviciosa</i>	200	-	200
<b>Kalinga</b>	<b>26</b>	<b>-</b>	<b>26</b>
<i>Balbalan</i>	3	-	3



REGION / PROVINCE / MUNICIPALITY	NO. OF DAMAGED HOUSES		
	Total	Totally	Partially
<i>Pasil</i>	23	-	23

Note: Ongoing assessment and validation being conducted.

Source: DSWD FOS

## V. Cost of Humanitarian Assistance Provided

A total of **₱3,610,748.92** worth of assistance was provided to the affected families; of which, **₱2,893,623.92** was provided by **DSWD**, **₱662,405.00** from the **Local Government Units (LGUs)**, and **₱54,720.00** from a **non-government organization (NGO)** (see Table 6).

**Table 6. Cost of Assistance Provided to Affected Families / Persons**

REGION / PROVINCE / MUNICIPALITY	COST OF ASSISTANCE				
	DSWD	LGUs	NGOs	OTHERS	GRAND TOTAL
<b>GRAND TOTAL</b>	<b>2,893,623.92</b>	<b>662,405.00</b>	<b>54,720.00</b>	<b>-</b>	<b>3,610,748.92</b>
<b>REGION I</b>	<b>67,800.00</b>	<b>107,175.00</b>	<b>-</b>	<b>-</b>	<b>174,975.00</b>
<b>Ilocos Norte</b>	<b>67,800.00</b>	<b>74,050.00</b>	<b>-</b>	<b>-</b>	<b>141,850.00</b>
<i>Province</i>	<i>67,800.00</i>	<i>-</i>	<i>-</i>	<i>-</i>	<i>67,800.00</i>
<i>Badoc</i>	<i>-</i>	<i>32,550.00</i>	<i>-</i>	<i>-</i>	<i>32,550.00</i>
<i>CITY OF BATAC</i>	<i>-</i>	<i>41,500.00</i>	<i>-</i>	<i>-</i>	<i>41,500.00</i>
<b>Ilocos Sur</b>	<b>-</b>	<b>33,125.00</b>	<b>-</b>	<b>-</b>	<b>33,125.00</b>
<i>Bantay</i>	<i>-</i>	<i>5,355.00</i>	<i>-</i>	<i>-</i>	<i>5,355.00</i>
<i>San Esteban</i>	<i>-</i>	<i>9,000.00</i>	<i>-</i>	<i>-</i>	<i>9,000.00</i>
<i>Suyo</i>	<i>-</i>	<i>15,200.00</i>	<i>-</i>	<i>-</i>	<i>15,200.00</i>
<i>CITY OF VIGAN (Capital)</i>	<i>-</i>	<i>3,570.00</i>	<i>-</i>	<i>-</i>	<i>3,570.00</i>
<b>REGION II</b>	<b>13,279.50</b>	<b>-</b>	<b>-</b>	<b>-</b>	<b>13,279.50</b>
<b>Cagayan</b>	<b>13,279.50</b>	<b>-</b>	<b>-</b>	<b>-</b>	<b>13,279.50</b>
<i>Aparri</i>	<i>13,279.50</i>	<i>-</i>	<i>-</i>	<i>-</i>	<i>13,279.50</i>
<b>CAR</b>	<b>2,812,544.42</b>	<b>555,230.00</b>	<b>54,720.00</b>	<b>-</b>	<b>3,422,494.42</b>
<b>Abra</b>	<b>2,812,544.42</b>	<b>555,230.00</b>	<b>54,720.00</b>	<b>-</b>	<b>3,422,494.42</b>
<i>Bangued (capital)</i>	<i>136,192.00</i>	<i>7,000.00</i>	<i>-</i>	<i>-</i>	<i>143,192.00</i>
<i>Boliney</i>	<i>678.00</i>	<i>250.00</i>	<i>-</i>	<i>-</i>	<i>928.00</i>
<i>Bucloc</i>	<i>339,000.00</i>	<i>379,220.00</i>	<i>-</i>	<i>-</i>	<i>718,220.00</i>
<i>Daguioman</i>	<i>5,000.00</i>	<i>-</i>	<i>-</i>	<i>-</i>	<i>5,000.00</i>
<i>Dolores</i>	<i>20,000.00</i>	<i>-</i>	<i>-</i>	<i>-</i>	<i>20,000.00</i>
<i>La Paz</i>	<i>5,000.00</i>	<i>-</i>	<i>-</i>	<i>-</i>	<i>5,000.00</i>
<i>Lagangilang</i>	<i>5,000.00</i>	<i>-</i>	<i>-</i>	<i>-</i>	<i>5,000.00</i>
<i>Lagayan</i>	<i>956,142.25</i>	<i>-</i>	<i>-</i>	<i>-</i>	<i>956,142.25</i>
<i>Licuan-Baay (Licuan)</i>	<i>-</i>	<i>17,600.00</i>	<i>-</i>	<i>-</i>	<i>17,600.00</i>
<i>Pidigan</i>	<i>10,000.00</i>	<i>-</i>	<i>-</i>	<i>-</i>	<i>10,000.00</i>
<i>Pilar</i>	<i>135,430.00</i>	<i>-</i>	<i>-</i>	<i>-</i>	<i>135,430.00</i>
<i>Sallapadan</i>	<i>5,000.00</i>	<i>-</i>	<i>-</i>	<i>-</i>	<i>5,000.00</i>
<i>San Isidro</i>	<i>-</i>	<i>76,160.00</i>	<i>-</i>	<i>-</i>	<i>76,160.00</i>
<i>San Juan</i>	<i>94,171.50</i>	<i>-</i>	<i>-</i>	<i>-</i>	<i>94,171.50</i>
<i>San Quintin</i>	<i>10,000.00</i>	<i>-</i>	<i>-</i>	<i>-</i>	<i>10,000.00</i>
<i>Tayum</i>	<i>10,000.00</i>	<i>-</i>	<i>-</i>	<i>-</i>	<i>10,000.00</i>
<i>Tineg</i>	<i>1,039,515.67</i>	<i>-</i>	<i>54,720.00</i>	<i>-</i>	<i>1,094,235.67</i>
<i>Villaviciosa</i>	<i>41,415.00</i>	<i>75,000.00</i>	<i>-</i>	<i>-</i>	<i>116,415.00</i>

Source: DSWD FOS

## VI. Response Actions and Interventions

### a. Standby Funds and Prepositioned Relief Stockpile

OFFICE	STANDBY FUNDS	STOCKPILE			TOTAL STANDBY FUNDS & STOCKPILE
		FAMILY FOOD PACKS		OTHER FOOD AND NON-FOOD ITEMS (FNIs)	
		QUANTITY	TOTAL COST		
<b>TOTAL</b>	<b>184,787,387.36</b>	<b>429,820</b>	<b>267,397,781.54</b>	<b>676,557,545.71</b>	<b>1,128,742,714.61</b>
DSWD CO	113,964,624.48	-	-	-	113,964,624.48
NRLMB NROC	-	46,657	32,887,479.00	125,445,982.52	158,333,461.52
NRLMB VDRC	-	7,961	4,906,295.00	24,098,266.97	29,004,561.97
DSWD FO I	5,082,232.51	37,941	23,198,922.05	28,993,945.68	57,275,100.24
DSWD FO II	1,727,180.16	22,533	13,042,574.00	14,865,406.66	29,635,160.82
DSWD FO CAR	5,000,065.08	23,755	16,071,730.24	61,210,462.32	82,282,257.64
Other FOs	59,013,285.13	290,973	177,290,781.25	421,943,481.56	658,247,547.94

Note: The Inventory Summary is as of 05 November 2022, 4PM.

Sources: DSWD-DRMB and DSWD-NRLMB

#### 1. Standby Funds

- ₱113.96 million Quick Response Fund (QRF) at the DSWD Central Office.
- ₱11.81 million available at DSWD FOs I, II, and CAR.
- ₱59.01 million in other DSWD FOs which may support the relief needs of the displaced families due to the Mw 6.4 earthquake through inter-FO augmentation.

#### 2. Prepositioned FFPs and Other Relief Items

- 54,618 FFPs available in Disaster Response Centers; of which, 46,657 FFPs are at the National Resource Operations Center (NROC), Pasay City and 7,961 FFPs are at the Visayas Disaster Resource Center (VDRC), Mandaue City.
- 84,229 FFPs available at DSWD FOs I, II, and CAR.
- 290,973 FFPs in other DSWD FOs which may support the relief needs of the displaced families due to the Mw 6.4 earthquake through inter-FO augmentation.
- ₱676.56 million worth of other FNIs at NROC, VDRC, and DSWD FO warehouses.

### b. Food and Non-food Items (FNIs)

#### DSWD FO CAR

DATE	ACTIVITIES								
28 October 2022	<ul style="list-style-type: none"> <li>• To date, the DSWD FO I Social Welfare and Development (SWAD) Team in Abra immediately provided the following relief items:               <table border="1"> <thead> <tr> <th>CITY / MUNICIPALITY</th> <th>RELIEF ITEM</th> </tr> </thead> <tbody> <tr> <td>Boliney, Abra</td> <td>1 FFP</td> </tr> <tr> <td>Lagayan, Abra</td> <td>46 FFPs 15 Sleeping kits</td> </tr> <tr> <td>Tineg, Abra</td> <td>249 FFPs 1 Hygiene kit 1 Family kit 1 Sleeping kit 1 Kitchen kit</td> </tr> </tbody> </table> </li> </ul>	CITY / MUNICIPALITY	RELIEF ITEM	Boliney, Abra	1 FFP	Lagayan, Abra	46 FFPs 15 Sleeping kits	Tineg, Abra	249 FFPs 1 Hygiene kit 1 Family kit 1 Sleeping kit 1 Kitchen kit
CITY / MUNICIPALITY	RELIEF ITEM								
Boliney, Abra	1 FFP								
Lagayan, Abra	46 FFPs 15 Sleeping kits								
Tineg, Abra	249 FFPs 1 Hygiene kit 1 Family kit 1 Sleeping kit 1 Kitchen kit								



**DSWD FO I**

DATE	ACTIVITIES
02 November 2022	<ul style="list-style-type: none"> <li>A total of 1,700 FFPs were produced at the DSWD FO I Regional warehouse in Biday, City of San Fernando, La Union through the help of 22 community volunteers from San Juan, La Union.</li> </ul>
31 October 2022	<ul style="list-style-type: none"> <li>DSWD FO I through the Disaster Response Management Division (DRMD) provided 100 FFPs to the affected families in Nueva Era, Ilocos Norte.</li> </ul>

**c. Other Activities**
**DSWD-DRMB**

DATE	ACTIVITIES
05 November 2022	<ul style="list-style-type: none"> <li>The DRMB Operations Center (OpCen) is in 24/7 virtual operation to closely monitor and coordinate with the National Resource and Logistics Management Bureau (NRLMB) and concerned DSWD FOs for significant updates relative to the Mw 6.4 earthquake incident in Lagayan, Abra.</li> </ul>
26 October 2022	<ul style="list-style-type: none"> <li>The DSWD-DRMB prepared Requisition Issuance Slip (RIS) for the augmentation and delivery of FNIs to DSWD FO CAR.</li> </ul>

**DSWD-NRLMB**

DATE	ACTIVITIES
05 November 2022	<ul style="list-style-type: none"> <li>DSWD-NRLMB is continuously repacking goods for possible augmentation.</li> <li>DSWD-NRLMB provides logistical augmentation to FOs for the delivery of FNIs to LGUs.</li> </ul>

**DSWD FO CAR**

DATE	ACTIVITIES
02 November 2022	<ul style="list-style-type: none"> <li>DSWD FO CAR Quick Response Team (QRT) rendered duty at the Regional Operations Center to monitor the situation in coordination with SWAD Provincial Offices.</li> </ul>
31 October 2022	<ul style="list-style-type: none"> <li>To date, DSWD FO CAR provided financial assistance to 46 beneficiaries in Abra amounting to a total of ₱230,000.00.</li> </ul>
28 October 2022	<ul style="list-style-type: none"> <li>DSWD FO CAR coordinated with the Department of Health (DOH) to validate the number of casualties relative to the Mw 6.4 earthquake.</li> <li>DSWD FO CAR deployed two (2) QRT members to assist in the unloading of family tents and sleeping kits at the new Regional warehouse.</li> <li>There were 101 injured individuals who were treated inside and outside hospitals.</li> </ul>

**DSWD FO I**

DATE	ACTIVITIES
31 October 2022	<ul style="list-style-type: none"> <li>To date, a total of 85 beneficiaries in Ilocos Norte were provided with financial assistance amounting to a total of ₱539,000.00.</li> </ul>
28 October 2022	<ul style="list-style-type: none"> <li>Coordination meeting between the Provincial Social Welfare and Development Office (PSWDO) of Ilocos Norte and members of DSWD FO I Provincial Operations Office (POO) Ilocos Norte Incident Management Team (IMT) was conducted in preparation for the provision of financial assistance and distribution of FFPs on 30 October 2022 in Adams, Ilocos Norte.</li> </ul>

**DSWD FO II**

DATE	ACTIVITIES
28 October 2022	<ul style="list-style-type: none"> <li>• DSWD FO II submitted their <b>terminal report</b>.</li> </ul>
27 October 2022	<ul style="list-style-type: none"> <li>• DSWD FO II led by Regional Director Lucia S. Alan conducted Critical Incident Stress Debriefing (CISD) to one (1) affected family in Aparri, Cagayan. Relief assistance was also extended to the family including ₱10,000.00 financial assistance through AICS, one (1) FFP, and other non-food items.</li> </ul>

\*\*\*\*\*

*The Disaster Response Operations Monitoring and Information Center (DROMIC) of the DSWD-DRMB is closely monitoring the effects of Mw 6.4 earthquake in Lagayan, Abra and is closely coordinating with the concerned DSWD Field Offices for significant disaster response updates and assistance provided.*

Prepared by:

**DIANE C. PELEGRINO**  
**MARIE JOYCE G. RAFANAN**

Released by:

**MARC LEO L. BUTAC**