

## **DSWD DROMIC Report #11 on the Effects of Shear Line in Visayas** as of 08 April 2025, 6AM

### **I. Situation Overview**

Issued on 19 March 2025 at around 4:00 PM, cloudy skies with scattered rains and isolated thunderstorms caused by Shear Line may have brought possible flash floods or landslides due to moderate to at times heavy rains in Visayas, Sorsogon, Masbate, Surigao del Norte, and Dinagat Islands.

On the same day, heavy rain accompanied by strong winds due to Shear Line was experienced in Brgy. 10, Victorias City in Negros Occidental and Brgy. Tagubanhon, Ajuy in Iloilo.

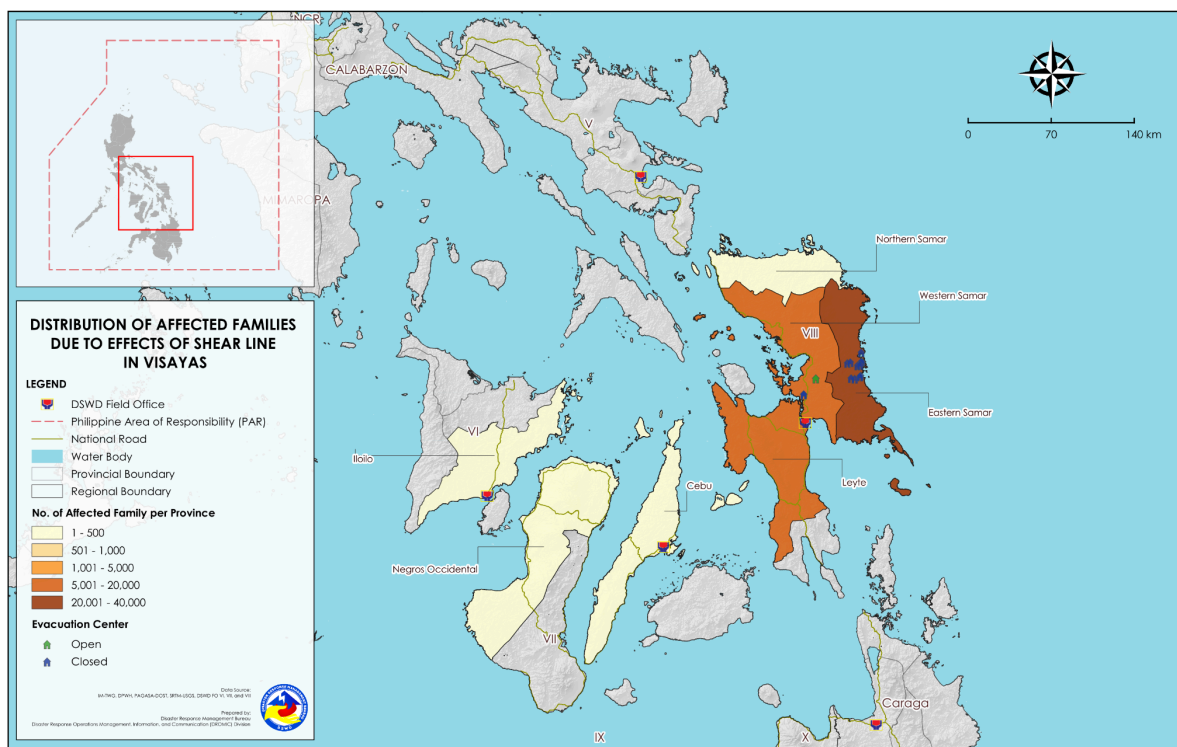
On 20 March 2025 at around 8:00 AM, the continuous rainfall brought by the effects of Shear Line was also experienced in San Remigio, Cebu and caused the disrupted sea travel of Locally Stranded Individuals (LSIs) at the port of San Remigio.

On the same day at around 11:00 AM, a landslide incident occurred at San Miguel-Babatngon Road, San Miguel, Leyte due to the continuous heavy rainfall caused by Shear Line. Meanwhile, a flooding incident also occurred at the Wright-Taft-Borongan Road, Brgy. Malinao in Taft, Eastern Samar. Both incidents led to impassable roads.

*Source: DOST-PAGASA Daily Weather Bulletin and DSWD Field Offices (FOs)*

### **II. Status of Affected Areas and Population**

A total of **51,904 families** or **182,793 persons** are affected in **296 barangays** in **Regions VI, VII, and VIII** (see Annex A).



### III. Status of Displaced Population

### a. Inside Evacuation Center

There are **11 families** or **47 persons** currently taking temporary shelter in **two (2) evacuation centers** in **Region VIII** (see Annex B).

### **b. Outside Evacuation Center**

There are **12 families** or **45 persons** temporarily staying with their relatives or friends (see Annex E).

### c. Total Displaced Population

There are **23 families** or **92 persons** still displaced in **Region VIII** (see Annex F).

#### IV. Damaged Houses

A total of **16 houses** were damaged; of which, **14 are totally damaged** and **two (2) are partially damaged** in **Regions VI and VIII** (see Annex G).

## V. Cost of Humanitarian Assistance Provided

A total of **₱25,122,051.82** worth of assistance was provided to the affected families; of which, **₱25,120,551.82** from **DSWD** and **₱1,500.00** from the **Local Government Units (LGUs)** (see Annex H).

## VI. Response Actions and Interventions

### a. Standby Funds and Prepositioned Relief Stockpile

OFFICE	STANDBY FUNDS	STOCKPILE			TOTAL STANDBY FUNDS & STOCKPILE
		FAMILY FOOD PACKS		OTHER FOOD AND NON-FOOD ITEMS (FNIs)	
		QUANTITY	TOTAL COST		
TOTAL	91,702,526.98	2,677,462	1,856,459,808.82	938,201,152.15	2,886,363,487.95
DSWD CO	47,980,826.98	-	-	-	47,980,826.98
NRLMB NROC	-	340,600	233,441,146.25	98,464,873.20	331,906,019.45
NRLMB VDRC	-	285,068	167,578,391.46	28,901,541.31	196,479,932.77
DSWD FO VI	3,000,000.00	147,701	107,043,931.36	40,538,781.60	150,582,712.96
DSWD FO VII	1,000,000.00	102,869	68,141,307.25	58,954,162.65	128,095,469.90
DSWD FO VIII	3,000,000.00	146,780	93,984,794.13	42,361,415.00	139,346,209.13
OTHER FOs	36,721,700.00	1,654,444	1,186,270,238.37	668,980,378.39	1,891,972,316.76

Note: The Inventory Summary is as of 08 April 2025, 4AM.

Source: DSWD-DRMB and DSWD-NRLMB

#### 1. Standby Funds

- ₱91.70 million Quick Response Fund (QRF) at the DSWD Central Office.
- ₱7 million available at DSWD FOs VI, VII, and VIII.
- ₱36.72 million available in other DSWD FOs which may support the relief needs of the families affected by the Effects of Shear Line in Visayas through inter-FO augmentation.

#### 2. Prepositioned FFPs and Other Relief Items

- 625,668 FFPs available in Disaster Response Centers; of which, 340,600 FFPs are at the National Resource Operations Center (NROC), Pasay City and 285,068 FFPs are at the Visayas Disaster Resource Center (VDRC), Mandaue City.
- 397,350 FFPs available at DSWD FO VI, VII, and VIII.
- 1,654,444 FFPs available in other DSWD FOs which may support the relief needs of the families affected by the effects of Shear Line in Visayas through inter-FO augmentation.
- ₱938.20 million worth of other FNIs at NROC, VDRC, and DSWD FOs warehouses.

### b. Food and Non-food Items (FNIs)

#### DSWD FO VI

DATE	ACTIVITIES
04 April 2025	<ul style="list-style-type: none"> <li>• DSWD FO VI facilitated the distribution of FFPs to the families affected by the Effects of Shear Line in Brgy. Tagubanhon, Ajuy, Iloilo.</li> </ul>
24 March 2025	<ul style="list-style-type: none"> <li>• DSWD FO VI facilitated the distribution of FNIs to the families affected by the Effects of Shear Line in Victorias City, Negros Occidental.</li> </ul>

### DSWD FO VII

DATE	ACTIVITIES
20 March 2025	<ul style="list-style-type: none"> <li>DSWD FO VI facilitated the distribution of food items to the LSIs affected by the Effects of Shear Line in San Remigio, Cebu.</li> </ul>

### DSWD FO VIII

DATE	ACTIVITIES
25 March 2025	<ul style="list-style-type: none"> <li>DSWD FO VIII facilitated the release and distribution of additional FFPs intended for the families affected by the Effects of Shear Line in the following LGUs:               <ul style="list-style-type: none"> <li>Lawaan, Easter Samar;</li> <li>Taft, Easter Samar;</li> <li>Can-avid, Easter Samar;</li> <li>Arteche, Eastern Samar;</li> <li>San Julian, Eastern Samar;</li> <li>Dolores, Eastern;</li> <li>Maydolong, Eastern Samar; and</li> <li>Sulat, Eastern Samar.</li> </ul> </li> </ul>
24 March 2025	<ul style="list-style-type: none"> <li>DSWD FO VIII facilitated the release and distribution of additional FFPs intended for the families affected by the Effects of Shear Line in the following LGUs:               <ul style="list-style-type: none"> <li>Jipapad, Eastern Samar;</li> <li>Dolores, Eastern Samar;</li> <li>Lawaan, Eastern Samar;</li> <li>Arteche, Eastern Samar;</li> <li>Taft, Eastern Samar;</li> <li>Sulat, Eastern Samar;</li> <li>Lawaan, Eastern Samar; and</li> <li>Lawaan, Eastern Samar.</li> </ul> </li> </ul>
23 March 2025	<ul style="list-style-type: none"> <li>DSWD FO VIII facilitated the release and distribution of additional FFPs intended for the families affected by the Effects of Shear Line in the following LGUs:               <ul style="list-style-type: none"> <li>Sulat, Eastern Samar;</li> <li>Dolores, Easter Samar;</li> <li>San Policarpo, Eastern Samar;</li> <li>Oras, Eastern Samar;</li> <li>Lawaan, Eastern Samar; and</li> <li>Taft, Eastern Samar.</li> </ul> </li> </ul>
22 March 2025	<ul style="list-style-type: none"> <li>DSWD FO VIII facilitated the release and distribution of FFPs intended to the families affected by the Effects of Shear Line in the following LGUs:               <ul style="list-style-type: none"> <li>San Jose de Buan, Samar;</li> <li>Arteche, Eastern Samar;</li> <li>Borongan City, Eastern Samar;</li> <li>Can-Avid, Eastern Samar;</li> <li>Dolores, Eastern Samar;</li> <li>Lawaan, Eastern Samar;</li> <li>Maslog, Eastern Samar;</li> <li>Mercedes, Eastern Samar;</li> <li>Oras, Eastern Samar;</li> <li>San Julian, Eastern Samar;</li> <li>San Policarpo, Eastern Samar;</li> <li>Sulat, Eastern Samar;</li> <li>Taft, Eastern Samar; and</li> <li>San Miguel, Leyte.</li> </ul> </li> </ul>

### c. Other Activities

#### DSWD FO VI

DATE	ACTIVITIES
07 April 2025	<ul style="list-style-type: none"> <li>DSWD FO VI submitted their <b>terminal report</b>.</li> </ul>

#### DSWD FO VII

DATE	ACTIVITIES
20 March 2025	<ul style="list-style-type: none"> <li>DSWD FO VII closely coordinated with the affected LGUs and other concerned offices for significant updates and any requests for augmentation.</li> </ul>

#### DSWD FO VIII

DATE	ACTIVITIES
27 March 2025	<ul style="list-style-type: none"> <li>DSWD FO VIII closely coordinated with the affected LGUs and other concerned offices for significant updates and any requests for augmentation.</li> <li>DSWD FO VIII Quick Response Team members were on standby alert, if the need arises.</li> <li>DSWD FO VII closely monitored the weather updates through the Department of Science and Technology - Philippine Atmospheric, Geophysical and Astronomical Services Administration.</li> </ul>

## Annexes

### Annex A. Number of Affected Families / Persons

REGION / PROVINCE / MUNICIPALITY	NUMBER OF AFFECTED		
	Barangays	Families	Persons
<b>GRAND TOTAL</b>	<b>296</b>	<b>51,904</b>	<b>182,793</b>
<b>REGION VI</b>	<b>2</b>	<b>19</b>	<b>91</b>
<b>Iloilo</b>	<b>1</b>	<b>18</b>	<b>90</b>
Ajuy	1	18	90
<b>Negros Occidental</b>	<b>1</b>	<b>1</b>	<b>1</b>
City of Victorias	1	1	1
<b>REGION VII</b>	<b>-</b>	<b>98</b>	<b>98</b>
<b>Cebu</b>	<b>-</b>	<b>98</b>	<b>98</b>
San Remigio	-	98	98
<b>REGION VIII</b>	<b>294</b>	<b>51,787</b>	<b>182,604</b>
<b>Eastern Samar</b>	<b>225</b>	<b>38,123</b>	<b>131,741</b>
Arteche	11	1,305	4,977
Can-Avid	24	1,778	6,709
City of Borongan	41	5,537	18,415
Dolores	13	3,397	12,255
Lawaan	16	3,916	13,453
Maslog	2	57	284
Maydolong	11	262	1,021
Mercedes	16	2,000	5,558
Oras	23	4,080	16,344
Quinapondan	1	2	9
Salcedo	8	311	1,153
San Julian	3	59	206
San Policarpo	17	4,897	18,004
Sulat	15	3,850	12,377
Taft	24	6,672	20,976
<b>Leyte</b>	<b>27</b>	<b>7,197</b>	<b>24,041</b>
Carigara	2	27	108
Dulag	3	145	558
Kananga	1	156	546
San Miguel	21	6,869	22,829
<b>Tacloban City</b>	<b>1</b>	<b>1</b>	<b>7</b>
<b>Northern Samar</b>	<b>3</b>	<b>398</b>	<b>1,729</b>
Lapinig	3	398	1,729
<b>Samar (Western Samar)</b>	<b>38</b>	<b>6,068</b>	<b>25,086</b>
Calbiga	9	632	2,165
Pinabacdao	8	657	2,746
San Jose de Buan	11	1,365	6,281
Santa Rita	10	3,414	13,894

Note: The affected families and persons in San Remigio, Cebu are LSIs.

\*Ongoing assessment and validation.

Source: DSWD FOs

## Annex B. Number of Displaced Families / Persons Inside Evacuation Center

REGION / PROVINCE / MUNICIPALITY	NUMBER OF EVACUATION CENTERS (ECs)		NUMBER OF DISPLACED INSIDE ECs			
			Families		Persons	
	CUM	NOW	CUM	NOW	CUM	NOW
<b>GRAND TOTAL</b>	<b>29</b>	<b>2</b>	<b>519</b>	<b>11</b>	<b>1,758</b>	<b>47</b>
<b>REGION VIII</b>	<b>29</b>	<b>2</b>	<b>519</b>	<b>11</b>	<b>1,758</b>	<b>47</b>
<b>Eastern Samar</b>	<b>23</b>	<b>-</b>	<b>412</b>	<b>-</b>	<b>1,443</b>	<b>-</b>
City of Borongan	11	-	149	-	440	-
San Julian	4	-	34	-	94	-
Sulat	8	-	229	-	909	-
Leyte	2	-	39	-	145	-
Dulag	1	-	15	-	47	-
San Miguel	1	-	24	-	98	-
<b>Samar (Western Samar)</b>	<b>4</b>	<b>2</b>	<b>68</b>	<b>11</b>	<b>170</b>	<b>47</b>
Calbiga	2	2	11	11	47	47
Santa Rita	2	-	57	-	123	-

Note: The DSWD FO VIII, in coordination with the affected LGUs, is continuously gathering data per sex, age, and sectoral breakdown of the displaced population inside EC. Ongoing assessment and validation.

Source: DSWD FO VII

## Annex C. Sex & Age Distribution of IDPs Inside Evacuation Centers

Annex C

REGION / PROVINCE / MUNICIPALITY	SEX & AGE DISTRIBUTION of IDPS INSIDE ECS										
	TODDLERS 7 months- 2 y/o		PRESCHOOLERS 3-5 y/o		SCHOOL AGE 6-12 y/o	TEENAGE 13-17 y/o		ADULT 18-59 y/o		Elderly 60 and above	
	Male	Female	Male	Female	Male	Male	Female	Male	Female	Male	Female
	NOW	NOW	NOW	NOW	NOW	NOW	NOW	NOW	NOW	NOW	NOW
GRAND TOTAL	2	1	4	1	8	2	2	10	14	2	1
REGION VIII	2	1	4	1	8	2	2	10	14	2	1
Samar (Western Samar)	2	1	4	1	8	2	2	10	14	2	1
Calbiga	2	1	4	1	8	2	2	10	14	2	1

Note: Annex C reflects the available sex and age-disaggregated data of the IDPs inside the evacuation centers (ECs). The DSWD FOs in coordination with the affected LGUs are continuously gathering data per sex and age breakdown of the displaced population inside ECs.

\*Ongoing assessment and validation.

Source: DSWD FO VII

## Annex D. Sectoral Distribution of IDPs inside ECs

REGION / PROVINCE / MUNICIPALITY	SECTORAL DATA of IDPS INSIDE ECS	
	LACTATING MOTHERS	PERSONS W/ DISABILITY
		Male
	NOW	NOW
<b>GRAND TOTAL</b>	<b>2</b>	<b>1</b>
<b>REGION VIII</b>	<b>2</b>	<b>1</b>
<b>Samar (Western Samar)</b>	<b>2</b>	<b>1</b>
Calbiga	2	1

Note: The DSWD FOs, in coordination with the affected LGUs, are continuously gathering data on the sectoral breakdown of the displaced population inside the evacuation centers.

\*Ongoing assessment and validation.

Source: DSWD FO VII

## Annex E. Number of Displaced Families / Persons Outside Evacuation Center

REGION / PROVINCE / MUNICIPALITY	NUMBER OF DISPLACED			
	OUTSIDE ECs			
	Families		Persons	
	CUM	NOW	CUM	NOW
<b>GRAND TOTAL</b>	<b>1,549</b>	<b>12</b>	<b>5,966</b>	<b>45</b>
<b>REGION VI</b>	<b>1</b>	<b>-</b>	<b>1</b>	<b>-</b>
<b>Negros Occidental</b>	<b>1</b>	<b>-</b>	<b>1</b>	<b>-</b>
<i>City of Victorias</i>	<i>1</i>	<i>-</i>	<i>1</i>	<i>-</i>
<b>REGION VIII</b>	<b>1,548</b>	<b>12</b>	<b>5,965</b>	<b>45</b>
<b>Eastern Samar</b>	<b>1,515</b>	<b>-</b>	<b>5,840</b>	<b>-</b>
<i>Arteche</i>	<i>1,305</i>	<i>-</i>	<i>4,977</i>	<i>-</i>
<i>City of Borongan</i>	<i>49</i>	<i>-</i>	<i>197</i>	<i>-</i>
<i>Maydolong</i>	<i>156</i>	<i>-</i>	<i>648</i>	<i>-</i>
<i>Quinapondan</i>	<i>2</i>	<i>-</i>	<i>9</i>	<i>-</i>
<i>Taft</i>	<i>3</i>	<i>-</i>	<i>9</i>	<i>-</i>
<b>Tacloban City</b>	<b>1</b>	<b>-</b>	<b>7</b>	<b>-</b>
<b>Samar (Western Samar)</b>	<b>32</b>	<b>12</b>	<b>118</b>	<b>45</b>
<i>Calbiga</i>	<i>12</i>	<i>12</i>	<i>45</i>	<i>45</i>
<i>Santa Rita</i>	<i>20</i>	<i>-</i>	<i>73</i>	<i>-</i>

Note: Ongoing assessment and validation.

Source: DSWD FO VIII

## Annex F. Total Number of Displaced Families / Persons

REGION / PROVINCE / MUNICIPALITY	NUMBER OF DISPLACED			
	TOTAL			
	Families		Persons	
	CUM	NOW	CUM	NOW
<b>GRAND TOTAL</b>	<b>2,068</b>	<b>23</b>	<b>7,724</b>	<b>92</b>
<b>REGION VI</b>	<b>1</b>	<b>-</b>	<b>1</b>	<b>-</b>
<b>Negros Occidental</b>	<b>1</b>	<b>-</b>	<b>1</b>	<b>-</b>
<i>City of Victorias</i>	<i>1</i>	<i>-</i>	<i>1</i>	<i>-</i>
<b>REGION VIII</b>	<b>2,067</b>	<b>23</b>	<b>7,723</b>	<b>92</b>
<b>Eastern Samar</b>	<b>1,927</b>	<b>-</b>	<b>7,283</b>	<b>-</b>
<i>Arteche</i>	<i>1,305</i>	<i>-</i>	<i>4,977</i>	<i>-</i>
<i>City of Borongan</i>	<i>198</i>	<i>-</i>	<i>637</i>	<i>-</i>
<i>Maydolong</i>	<i>156</i>	<i>-</i>	<i>648</i>	<i>-</i>
<i>Quinapondan</i>	<i>2</i>	<i>-</i>	<i>9</i>	<i>-</i>
<i>San Julian</i>	<i>34</i>	<i>-</i>	<i>94</i>	<i>-</i>
<i>Sulat</i>	<i>229</i>	<i>-</i>	<i>909</i>	<i>-</i>
<i>Taft</i>	<i>3</i>	<i>-</i>	<i>9</i>	<i>-</i>
<b>Leyte</b>	<b>39</b>	<b>-</b>	<b>145</b>	<b>-</b>
<i>Dulag</i>	<i>15</i>	<i>-</i>	<i>47</i>	<i>-</i>
<i>San Miguel</i>	<i>24</i>	<i>-</i>	<i>98</i>	<i>-</i>
<b>Tacloban City</b>	<b>1</b>	<b>-</b>	<b>7</b>	<b>-</b>
<b>Samar (Western Samar)</b>	<b>100</b>	<b>23</b>	<b>288</b>	<b>92</b>
<i>Calbiga</i>	<i>23</i>	<i>23</i>	<i>92</i>	<i>92</i>
<i>Santa Rita</i>	<i>77</i>	<i>-</i>	<i>196</i>	<i>-</i>

Note: Ongoing assessment and validation.

Source: DSWD FO VIII



## Annex G. Number of Damaged Houses

REGION / PROVINCE / MUNICIPALITY	NO. OF DAMAGED HOUSES		
	Total	Totally	Partially
<b>GRAND TOTAL</b>	<b>16</b>	<b>14</b>	<b>2</b>
<b>REGION VI</b>	<b>1</b>	<b>1</b>	<b>-</b>
<b>Negros Occidental</b>	<b>1</b>	<b>1</b>	<b>-</b>
<i>City of Victorias</i>	<i>1</i>	<i>1</i>	<i>-</i>
<b>REGION VIII</b>	<b>15</b>	<b>13</b>	<b>2</b>
<b>Tacloban City</b>	<b>1</b>	<b>1</b>	<b>-</b>
<b>Samar (Western Samar)</b>	<b>14</b>	<b>12</b>	<b>2</b>
<i>Calbiga</i>	<i>12</i>	<i>11</i>	<i>1</i>
<i>Pinabacdao</i>	<i>2</i>	<i>1</i>	<i>1</i>

Note: Ongoing assessment and validation.

Source: DSWD FOs VI and VIII

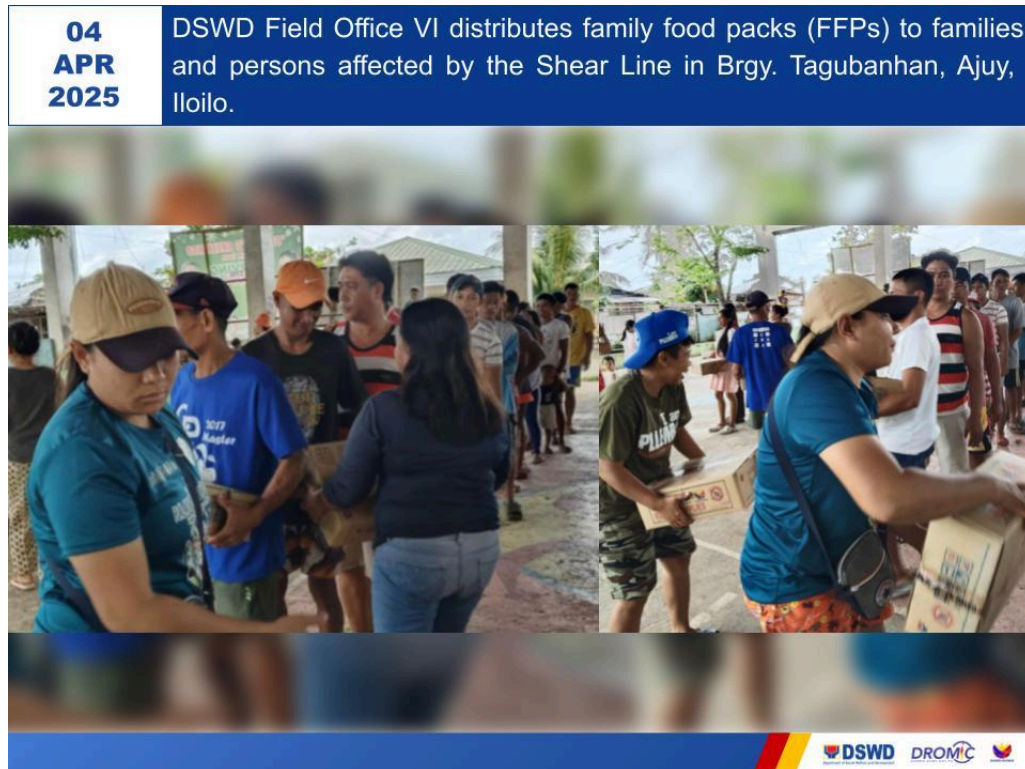
## Annex H. Cost of Assistance Provided to Affected Families / Persons

REGION / PROVINCE / MUNICIPALITY	COST OF ASSISTANCE				
	DSWD	LGUs	NGOs	OTHERS	GRAND TOTAL
<b>GRAND TOTAL</b>	<b>25,120,551.82</b>	<b>1,500.00</b>	<b>-</b>	<b>-</b>	<b>25,122,051.82</b>
<b>REGION VI</b>	<b>18,379.28</b>	<b>1,500.00</b>	<b>-</b>	<b>-</b>	<b>19,879.28</b>
<b>Iloilo</b>	<b>10,980.00</b>	<b>-</b>	<b>-</b>	<b>-</b>	<b>10,980.00</b>
<i>Ajuy</i>	<i>10,980.00</i>	<i>-</i>	<i>-</i>	<i>-</i>	<i>10,980.00</i>
<b>Negros Occidental</b>	<b>7,399.28</b>	<b>1,500.00</b>	<b>-</b>	<b>-</b>	<b>8,899.28</b>
<i>City of Victorias</i>	<i>7,399.28</i>	<i>1,500.00</i>	<i>-</i>	<i>-</i>	<i>8,899.28</i>
<b>REGION VII</b>	<b>3,690.50</b>	<b>-</b>	<b>-</b>	<b>-</b>	<b>3,690.50</b>
<b>Cebu</b>	<b>3,690.50</b>	<b>-</b>	<b>-</b>	<b>-</b>	<b>3,690.50</b>
<i>San Remigio</i>	<i>3,690.50</i>	<i>-</i>	<i>-</i>	<i>-</i>	<i>3,690.50</i>
<b>REGION VIII</b>	<b>25,098,482.04</b>	<b>-</b>	<b>-</b>	<b>-</b>	<b>25,098,482.04</b>
<b>Eastern Samar</b>	<b>22,586,802.04</b>	<b>-</b>	<b>-</b>	<b>-</b>	<b>22,586,802.04</b>
<i>Arteche</i>	<i>858,911.44</i>	<i>-</i>	<i>-</i>	<i>-</i>	<i>858,911.44</i>
<i>Can-Avid</i>	<i>1,141,564.90</i>	<i>-</i>	<i>-</i>	<i>-</i>	<i>1,141,564.90</i>
<i>City of Borongan</i>	<i>2,641,393.70</i>	<i>-</i>	<i>-</i>	<i>-</i>	<i>2,641,393.70</i>
<i>Dolores</i>	<i>2,603,200.90</i>	<i>-</i>	<i>-</i>	<i>-</i>	<i>2,603,200.90</i>
<i>Lawaan</i>	<i>2,504,242.80</i>	<i>-</i>	<i>-</i>	<i>-</i>	<i>2,504,242.80</i>
<i>Maslog</i>	<i>36,596.85</i>	<i>-</i>	<i>-</i>	<i>-</i>	<i>36,596.85</i>
<i>Maydolong</i>	<i>175,612.00</i>	<i>-</i>	<i>-</i>	<i>-</i>	<i>175,612.00</i>
<i>Mercedes</i>	<i>1,272,581.90</i>	<i>-</i>	<i>-</i>	<i>-</i>	<i>1,272,581.90</i>
<i>Oras</i>	<i>1,284,100.00</i>	<i>-</i>	<i>-</i>	<i>-</i>	<i>1,284,100.00</i>
<i>Salcedo</i>	<i>193,442.00</i>	<i>-</i>	<i>-</i>	<i>-</i>	<i>193,442.00</i>
<b>San Julian</b>	<b>36,698.00</b>	<b>-</b>	<b>-</b>	<b>-</b>	<b>36,698.00</b>
<i>San Policarpo</i>	<i>3,097,658.60</i>	<i>-</i>	<i>-</i>	<i>-</i>	<i>3,097,658.60</i>
<i>Sulat</i>	<i>2,415,253.60</i>	<i>-</i>	<i>-</i>	<i>-</i>	<i>2,415,253.60</i>
<i>Taft</i>	<i>4,325,545.35</i>	<i>-</i>	<i>-</i>	<i>-</i>	<i>4,325,545.35</i>
<b>Leyte</b>	<b>1,284,100.00</b>	<b>-</b>	<b>-</b>	<b>-</b>	<b>1,284,100.00</b>
<i>San Miguel</i>	<i>1,284,100.00</i>	<i>-</i>	<i>-</i>	<i>-</i>	<i>1,284,100.00</i>
<b>Tacloban City</b>	<b>10,000.00</b>	<b>-</b>	<b>-</b>	<b>-</b>	<b>10,000.00</b>
<b>Samar (Western Samar)</b>	<b>1,217,580.00</b>	<b>-</b>	<b>-</b>	<b>-</b>	<b>1,217,580.00</b>
<i>San Jose de Buan</i>	<i>1,217,580.00</i>	<i>-</i>	<i>-</i>	<i>-</i>	<i>1,217,580.00</i>

Note: The reflected DSWD assistance covers the cost of food and non-food items (FNIs) and financial assistance provided to the affected families / persons.

Source: DSWD FOs

## Annex I. Photo Documentation



\*\*\*\*\*

*This report is a continuation of the DSWD DROMIC Report on the Effects of Shear Line in Eastern Visayas. The Disaster Response Operations Management, Information, and Communication (DROMIC) Division of DSWD-DRMB is closely coordinating with DSWD FOs VI, VII and VIII for significant disaster response updates and assistance provided.*

Prepared by:

**JOANNA YSABELLA S. TINGIN**

Released by:

**MARIE JOYCE G. RAFANAN**